

Product datasheet for **AP31366FC-N**

Von Willebrand Factor (VWF) Sheep Polyclonal Antibody

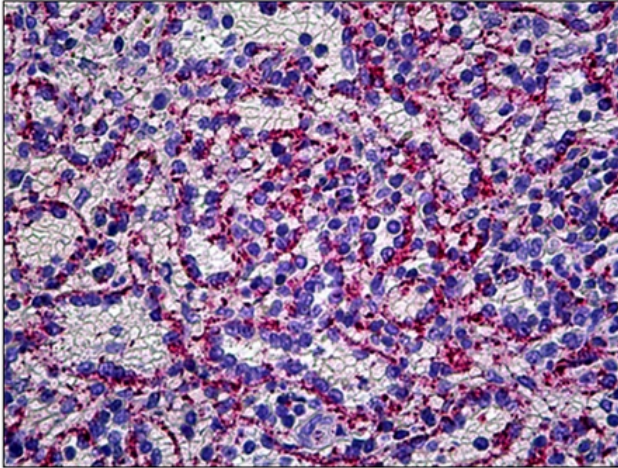
Product data:

Product Type:	Primary Antibodies
Applications:	IF, IHC
Recommended Dilution:	Immunofluorescence: 1/25 - 1/50. Immunohistochemistry on Frozen Sections. Immunohistochemistry on Paraffin Sections: 1/200.
Reactivity:	Human
Host:	Sheep
Isotype:	IgG
Clonality:	Polyclonal
Immunogen:	Human von Willebrand Factor Antigen (vWF) prepared from citrated Human plasma (>95%).
Specificity:	Recognizes human Von Willebrand Factor (vWF). No arcs when tested by IEP against human serum. Identity has been confirmed by double diffusion (Ouchterlony) vs. Hhuman vWF and an anti-Human vWF of known specificity.
Formulation:	PBS, pH 7.2 with 0.09% Sodium Azide Label: FITC State: Liquid purified IgG fraction. Label: Fluorescein
Concentration:	lot specific
Purification:	Ion Exchange Chromatography.
Conjugation:	FITC
Storage:	Store the antibody undiluted at 2-8°C for one month or (in aliquots) at -20°C for longer. Avoid repeated freezing and thawing.
Stability:	Shelf life: one year from despatch.
Gene Name:	von Willebrand factor
Database Link:	Entrez Gene 7450 Human P04275



[View online »](#)

- Background:** Von Willebrand Factor (VWF) functions as both an antihemophilic factor carrier and a platelet-vessel wall mediator in the blood coagulation system. It is crucial to the hemostasis process. Mutations in this gene or deficiencies in this protein result in von Willebrand's disease.
- Synonyms:** vWF, von Willebrand antigen 2, von Willebrand antigen II, F8VWF, Factor VIII Related Antigen
- Protein Families:** Druggable Genome, Secreted Protein
- Protein Pathways:** Complement and coagulation cascades, ECM-receptor interaction, Focal adhesion

Product images:

Human Spleen, Endothelium: Formalin-Fixed, Paraffin-Embedded (FFPE).