

## Product datasheet for **AP31363PU-N**

### Endostatin (COL18A1) (801-850) Rabbit Polyclonal Antibody

#### Product data:

Product Type:	Primary Antibodies
Applications:	ELISA, IF, IHC
Recommended Dilution:	<b>ELISA:</b> 1/5000. <b>Immunofluorescence:</b> 1/100 - 1/500. <b>Immunohistochemistry on Paraffin Sections:</b> 1/100.
Reactivity:	Human, Mouse
Host:	Rabbit
Isotype:	IgG
Clonality:	Polyclonal
Immunogen:	Synthetic peptide from Human Collagen XVIII alpha1 (aa801-850)
Specificity:	This antibody detects endogenous levels of total Collagen XVIII alpha1 protein.
Formulation:	PBS (without Mg <sup>2+</sup> , Ca <sup>2+</sup> ), pH 7.4, 150 mM Sodium Chloride, 0.02% Sodium Azide and 50% Glycerol State: Aff - Purified State: Liquid purified IgG fraction
Concentration:	lot specific
Purification:	Immunoaffinity Chromatography
Conjugation:	Unconjugated
Storage:	Store the antibody undiluted at 2-8°C for one month or (in aliquots) at -20°C for longer. Avoid repeated freezing and thawing.
Stability:	Shelf life: one year from despatch.
Gene Name:	collagen type XVIII alpha 1 chain
Database Link:	<a href="#">Entrez Gene 12822 Mouse</a> <a href="#">Entrez Gene 80781 Human</a> <a href="#">P39060</a>



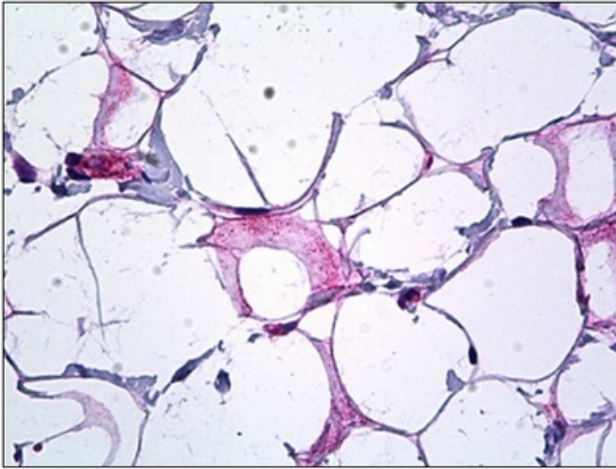
[View online »](#)

**Background:**

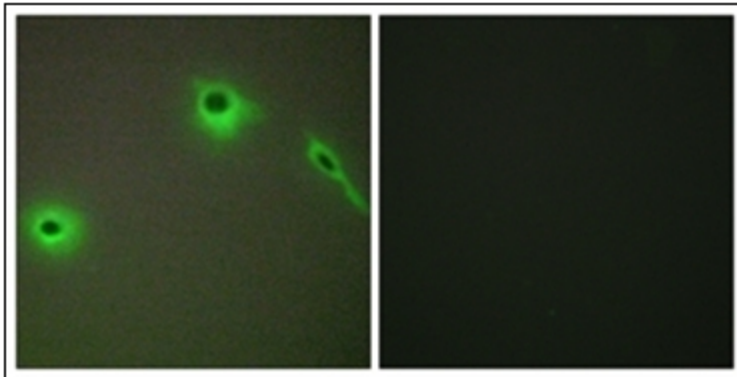
COL18A1 encodes the alpha chain of type XVIII collagen. This collagen is one of the multiplexins, extracellular matrix proteins that contain multiple triple-helix domains (collagenous domains) interrupted by non-collagenous domains. The proteolytically produced C-terminal fragment of type XVIII collagen is endostatin, a potent antiangiogenic protein. Mutations in this gene are associated with Knobloch syndrome. The main features of this syndrome involve retinal abnormalities, so type XVIII collagen may play an important role in retinal structure and in neural tube closure.

**Synonyms:**

COL18A1, Endostatin, KNO1

**Product images:**

Human Breast, Collagen: Formalin-Fixed, Paraffin-Embedded (FFPE).



Immunofluorescence analysis of A549 cells, using Collagen XVIII alpha1 Antibody. The picture on the right is treated with the synthesized peptide.