

Product datasheet for **AP31361PU-N**

eNOS (NOS3) (1181-1194) Rabbit Polyclonal Antibody

Product data:

Product Type:	Primary Antibodies
Applications:	IHC, WB
Recommended Dilution:	Immunohistochemistry on Paraffin Sections: 5 µg/ml. Western Blot.
Reactivity:	Bovine, Canine, Guinea Pig, Human, Mouse, Porcine, Rat, Monkey, Rabbit
Host:	Rabbit
Isotype:	IgG
Clonality:	Polyclonal
Immunogen:	kLH-conjugated, synthetic peptide corresponding to amino acids 1181-1194 of Human eNOS/NOS III
Specificity:	Recognizes eNOS/NOS III, Mr ~135kD at aa 1181-1194.
Formulation:	PBS, pH 7.6, 0.07% Sodium Azide, before the addition of Glycerol to 30% State: Purified State: Liquid purified IgG fraction
Concentration:	lot specific
Purification:	Protein A Chromatography
Conjugation:	Unconjugated
Storage:	Store the antibody undiluted at 2-8°C for one month or (in aliquots) at -20°C for longer. Avoid repeated freezing and thawing.
Stability:	Shelf life: one year from despatch.
Gene Name:	nitric oxide synthase 3
Database Link:	Entrez Gene 18127 Mouse Entrez Gene 24600 Rat Entrez Gene 4846 Human P29474
Background:	Nitric oxide is a reactive free radical which acts as a biologic mediator in several processes, including neurotransmission and antimicrobial and antitumoral activities. Nitric oxide is synthesized from L-arginine by nitric oxide synthases. Variations in this gene are associated with susceptibility to coronary spasm. Multiple transcript variants encoding different isoforms have been found for this gene.



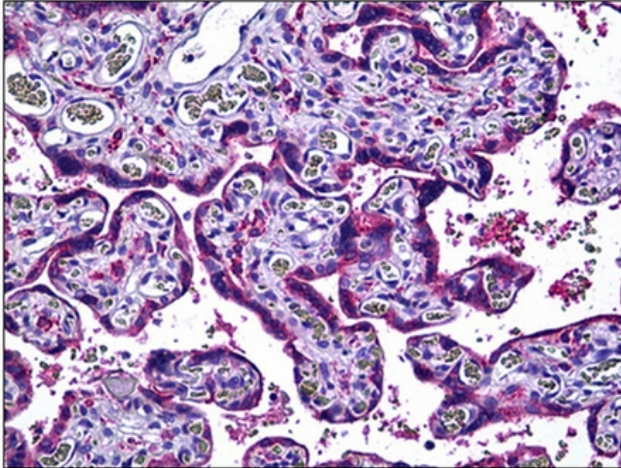
[View online »](#)

Synonyms: Endothelial NOS, EC-NOS, NOS type III, Constitutive NOS, eNOS

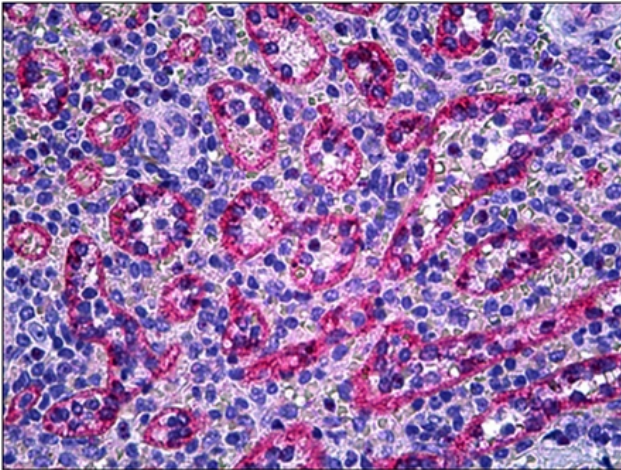
Protein Families: Druggable Genome

Protein Pathways: Alzheimer's disease, Amyotrophic lateral sclerosis (ALS), Arginine and proline metabolism, Calcium signaling pathway, Long-term depression, Metabolic pathways, Pathways in cancer, Small cell lung cancer, VEGF signaling pathway

Product images:



Human Placenta: Formalin-Fixed, Paraffin-Embedded (FFPE).



Human Spleen: Formalin-Fixed, Paraffin-Embedded (FFPE)