

Product datasheet for **AP31360PU-N**

TPX2 Rabbit Polyclonal Antibody

Product data:

Product Type:	Primary Antibodies
Applications:	ELISA, IHC, WB
Recommended Dilution:	ELISA: 1/1000. Immunohistochemistry on Paraffin Sections: 1/100. Western Blot: 1/500 - 1/1000.
Reactivity:	Human, Mouse
Host:	Rabbit
Isotype:	IgG
Clonality:	Polyclonal
Immunogen:	Synthetic peptide - KLH conjugated
Specificity:	This aAntibody detects endogenous levels of total TPX2 protein.
Formulation:	PBS (without Mg ²⁺ , Ca ²⁺), pH 7.4, 150 mM Sodium Chloride, 0.02% Sodium Azide and 50% Glycerol. State: Purified State: Liquid purified IgG fraction.
Concentration:	lot specific
Purification:	Immunoaffinity Chromatography.
Conjugation:	Unconjugated
Storage:	Store the antibody undiluted at 2-8°C for one month or (in aliquots) at -20°C for longer. Avoid repeated freezing and thawing.
Stability:	Shelf life: one year from despatch.
Gene Name:	TPX2, microtubule nucleation factor
Database Link:	Entrez Gene 72119 Mouse Entrez Gene 22974 Human Q9ULW0



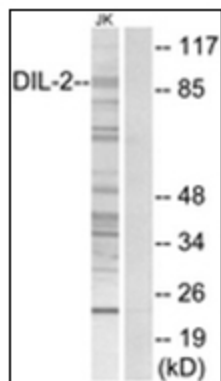
[View online »](#)

Background: TPX2 is a spindle assembly factor, required for normal assembly of mitotic spindles, for normal assembly of microtubules during apoptosis, and for chromatin and/or kinetochore dependent microtubule nucleation. TPX2 mediates AURKA localization to spindle microtubules, activates AURKA by promoting its autophosphorylation at 'Thr-288', and protects this residue against dephosphorylation.

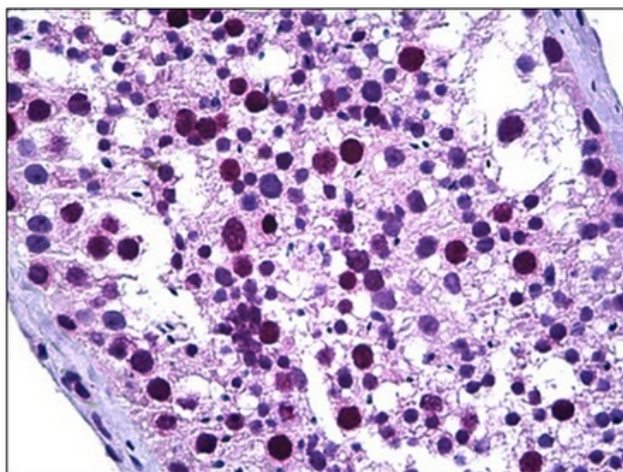
Synonyms: DIL-2, C20orf1, C20orf2, HCA519

Protein Families: Druggable Genome, Stem cell - Pluripotency

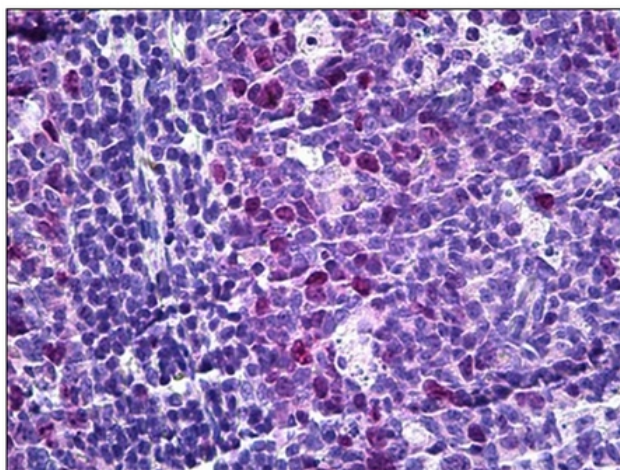
Product images:



Western blot analysis of extracts from Jurkat cells, using TPX2 Antibody. The lane on the right is treated with the synthesized peptide.



Human Testis: Formalin-Fixed, Paraffin-Embedded (FFPE)



Human Tonsil: Formalin-Fixed, Paraffin-Embedded (FFPE)