

## Product datasheet for **AP31359PU-N**

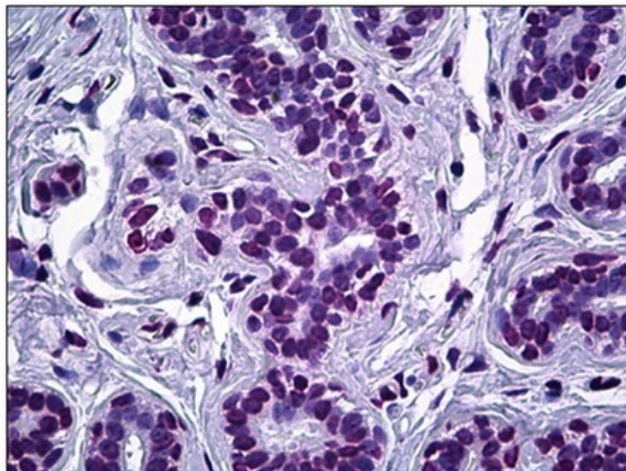
### ELAC2 (161-210) Rabbit Polyclonal Antibody

#### Product data:

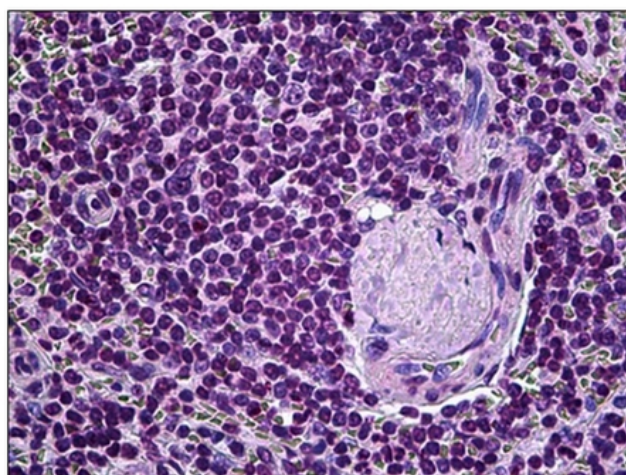
Product Type:	Primary Antibodies
Applications:	ELISA, IHC
Recommended Dilution:	<b>ELISA:</b> 1/10000. <b>Immunohistochemistry on Paraffin Sections:</b> 1/100.
Reactivity:	Human
Host:	Rabbit
Isotype:	IgG
Clonality:	Polyclonal
Immunogen:	Synthetic peptide (aa161-210)- KLH conjugated
Specificity:	This antibody detects endogenous levels of total ELAC2 protein.
Formulation:	PBS (without Mg <sup>2+</sup> , Ca <sup>2+</sup> ), pH 7.4, 150 mM Sodium Chloride, 0.02% Sodium Azide and 50% Glycerol. State: Aff - Purified State: Liquid purified IgG fraction.
Concentration:	lot specific
Purification:	Immunoaffinity Chromatography.
Conjugation:	Unconjugated
Storage:	Store undiluted at 2-8°C for one month or (in aliquots) at -20°C for longer. Avoid repeated freezing and thawing.
Stability:	Shelf life: one year from despatch.
Gene Name:	elaC ribonuclease Z 2
Database Link:	<a href="#">Entrez Gene 60528 Human Q9BQ52</a>
Synonyms:	Ribonuclease Z2, tRNase Z2
Protein Families:	Druggable Genome, Stem cell - Pluripotency



[View online »](#)

**Product images:**

Formalin-Fixed, Paraffin-Embedded Human Breast, Epithelium tissue stained with ELAC2 / HPC2 Antibody at 10 ug/ml after heat-induced antigen retrieval.



Formalin-Fixed, Paraffin-Embedded Human Spleen tissue stained with ELAC2 / HPC2 Antibody at 10 ug/ml after heat-induced antigen retrieval.