

Product datasheet for **AP31358PU-N**

RBP5 (N-term) Rabbit Polyclonal Antibody

Product data:

Product Type:	Primary Antibodies
Applications:	ELISA, IF, IHC
Recommended Dilution:	ELISA: 1/20000. Immunofluorescence: 1/100 - 1/500. Immunohistochemistry on Paraffin Sections: 1/100.
Reactivity:	Human
Host:	Rabbit
Isotype:	IgG
Clonality:	Polyclonal
Immunogen:	Synthetic peptide - KLH conjugated
Specificity:	This antibody detects endogenous levels of total RBP5 protein.
Formulation:	PBS (without Mg ²⁺ , Ca ²⁺), pH 7.4, 150 mM Sodium Chloride, 0.02% Sodium Azide and 50% Glycerol. State: Purified State: Liquid purified IgG fraction.
Concentration:	lot specific
Purification:	Immunoaffinity Chromatography.
Conjugation:	Unconjugated
Storage:	Store the antibody undiluted at 2-8°C for one month or (in aliquots) at -20°C for longer. Avoid repeated freezing and thawing.
Stability:	Shelf life: one year from despatch.
Gene Name:	retinol binding protein 5
Database Link:	Entrez Gene 83758 Human P82980



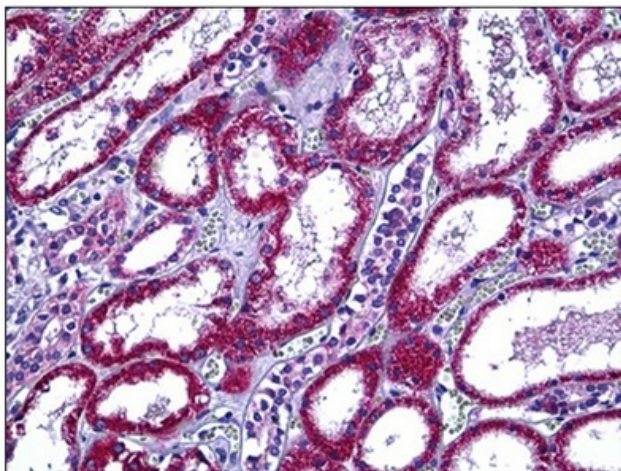
[View online »](#)

Background:

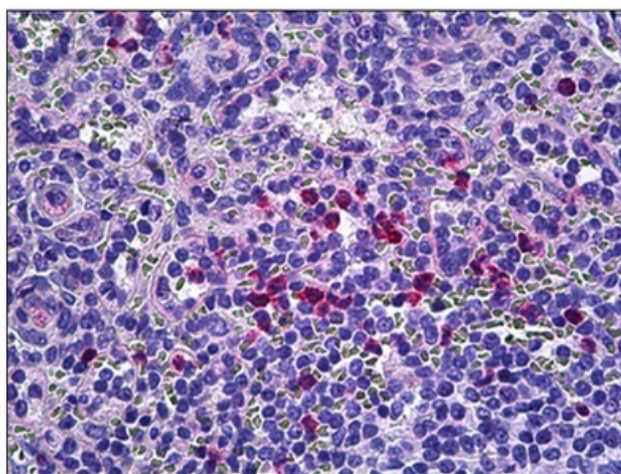
RBP5 belongs to the Retinol-binding proteins family. Assessment of retinol-binding protein is used to determine visceral protein mass in nutritional studies related to health. RBP5 is higher expression in adult kidney and liver and to a lesser extent in adult and fetal spleen, adult lymph nodes and appendix, and fetal liver and kidney. It is strongly decreased in hepatocellular carcinoma tissues.

Synonyms:

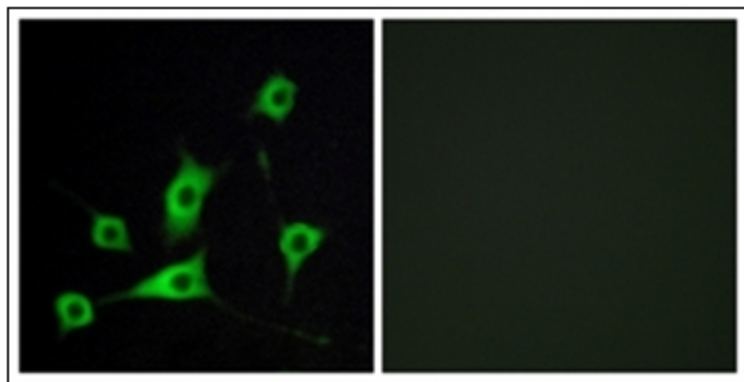
Cellular retinol-binding protein III, CRBP-III, CRBP3, CRBP3III, HRBPiso

Product images:

Human Kidney: Formalin-Fixed, Paraffin-Embedded (FFPE)



Human Spleen: Formalin-Fixed, Paraffin-Embedded (FFPE)



Immunofluorescence analysis of LOVO cells, using RBP5 Antibody. The picture on the right is treated with the synthesized peptide.