

## Product datasheet for **AP31356PU-N**

### Collagen VI (COL6A1) Rabbit Polyclonal Antibody

#### Product data:

Product Type:	Primary Antibodies
Applications:	ELISA, IHC
Recommended Dilution:	<b>ELISA:</b> 1/10000. <b>Immunohistochemistry on Paraffin Sections:</b> 1/100.
Reactivity:	Human, Mouse
Host:	Rabbit
Isotype:	IgG
Clonality:	Polyclonal
Immunogen:	Synthetic peptide - KLH conjugated
Specificity:	This antibody detects endogenous levels of total Collagen VI alpha1 protein.
Formulation:	PBS (without Mg <sup>2+</sup> , Ca <sup>2+</sup> ), pH 7.4, 150 mM Sodium Chloride, 0.02% Sodium Azide and 50% Glycerol. State: Purified State: Liquid purified IgG fraction.
Concentration:	lot specific
Purification:	Immunoaffinity Chromatography.
Conjugation:	Unconjugated
Storage:	Store the antibody undiluted at 2-8°C for one month or (in aliquots) at -20°C for longer. Avoid repeated freezing and thawing.
Stability:	Shelf life: one year from despatch.
Gene Name:	collagen type VI alpha 1
Database Link:	<a href="#">Entrez Gene 12833 Mouse</a> <a href="#">Entrez Gene 1291 Human</a> <a href="#">P12109</a>



[View online »](#)

**Background:**

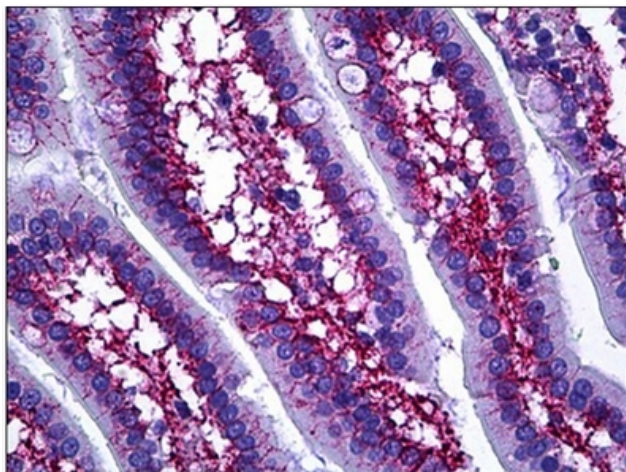
The collagens are a superfamily of proteins that play a role in maintaining the integrity of various tissues. Collagens are extracellular matrix proteins and have a triple-helical domain as their common structural element. Collagen VI is a major structural component of microfibrils. The basic structural unit of collagen VI is a heterotrimer of the alpha1(VI), alpha2(VI), and alpha3(VI) chains. The alpha2(VI) and alpha3(VI) chains are encoded by the COL6A2 and COL6A3 genes, respectively. The protein encoded by COL6A1 is the alpha 1 subunit of type VI collagen (alpha1(VI) chain). Mutations in the genes that code for the collagen VI subunits result in the autosomal dominant disorder, Bethlem myopathy.

**Synonyms:**

COL6A1

**Protein Pathways:**

ECM-receptor interaction, Focal adhesion

**Product images:**

Human Intestine: Formalin-Fixed, Paraffin-Embedded (FFPE)