

Product datasheet for **AP31352PU-N**

Calcineurin A (PPP3CA) (N-term) Rabbit Polyclonal Antibody

Product data:

Product Type:	Primary Antibodies
Applications:	IHC, WB
Recommended Dilution:	Immunohistochemistry on Paraffin Sections: 5 µg/ml. Western Blot: 1/1000.
Reactivity:	Human, Mouse
Host:	Rabbit
Clonality:	Polyclonal
Immunogen:	KLH conjugated synthetic peptide between 21-51 amino acids from the N-terminal region of human Calcineurin (PPP3CA).
Specificity:	This antibody detects PPP3CA / Calcineurin A (N-term).
Formulation:	PBS containing 0.09% Sodium Azide as preservative. State: Purified State: Liquid purified Ig fraction.
Purification:	Ammonium Sulfate Precipitation.
Conjugation:	Unconjugated
Storage:	Store undiluted at 2-8°C for one month or (in aliquots) at -20°C for longer. Avoid repeated freezing and thawing.
Stability:	Shelf life: one year from despatch.
Gene Name:	protein phosphatase 3 catalytic subunit alpha
Database Link:	Entrez Gene 19055 Mouse Entrez Gene 5530 Human Q08209
Background:	Calcineurin A alpha (PPP3CA), a PP2B type serine/threonine phosphatase, is a catalytic subunit of calcineurin which acts as a calcium-dependent and calmodulin-stimulated modifier of phosphorylation status. PPP3CA has been shown to function in calcium signaling and is believed to function in the calmodulin activation of calcineurin, motor neuron disease and neuronal reorganization after ischemic injury. Based on studies in knockout mice, PPP3CA has been implicated in learning and memory via hippocampal cytoskeletal changes.



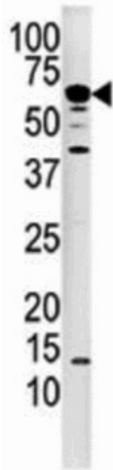
[View online »](#)

Synonyms: CALNA, CNA, PP2B catalytic subunit, protein phosphatase 2B catalytic subunit alpha

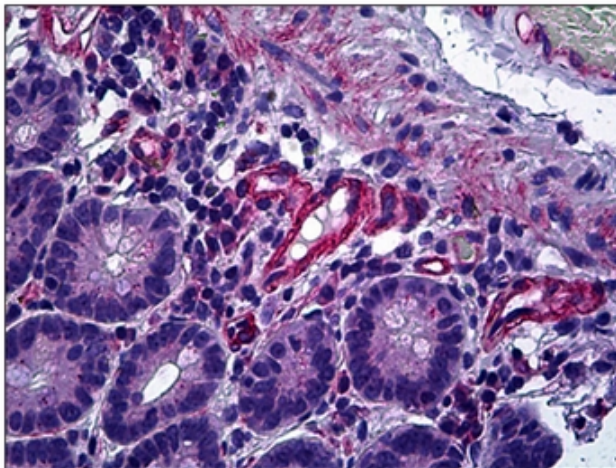
Protein Families: Druggable Genome, Phosphatase

Protein Pathways: Alzheimer's disease, Amyotrophic lateral sclerosis (ALS), Apoptosis, Axon guidance, B cell receptor signaling pathway, Calcium signaling pathway, Long-term potentiation, MAPK signaling pathway, Natural killer cell mediated cytotoxicity, Oocyte meiosis, T cell receptor signaling pathway, VEGF signaling pathway, Wnt signaling pathway

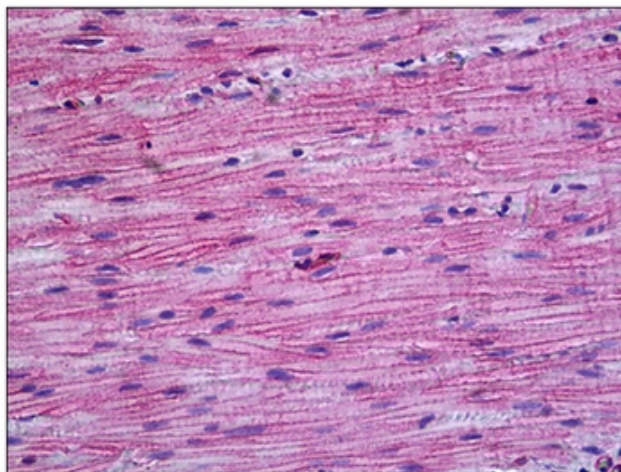
Product images:



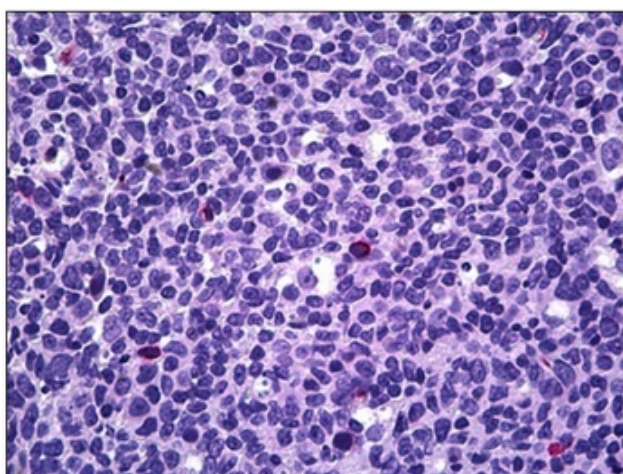
Western blot of anti-PPP3CA AP31352PU-N in mouse kidney tissue lysate. PPP3CA (arrow) was detected using the purified Pab



Human Small Intestine: Formalin-Fixed, Paraffin-Embedded (FFPE)



Human Intestine, Muscularis Propria: Formalin-Fixed, Paraffin-Embedded (FFPE)



Human Tonsil, Lymphocytes: Formalin-Fixed, Paraffin-Embedded (FFPE)