

## Product datasheet for **AP31348PU-N**

### CIB2 Rabbit Polyclonal Antibody

#### Product data:

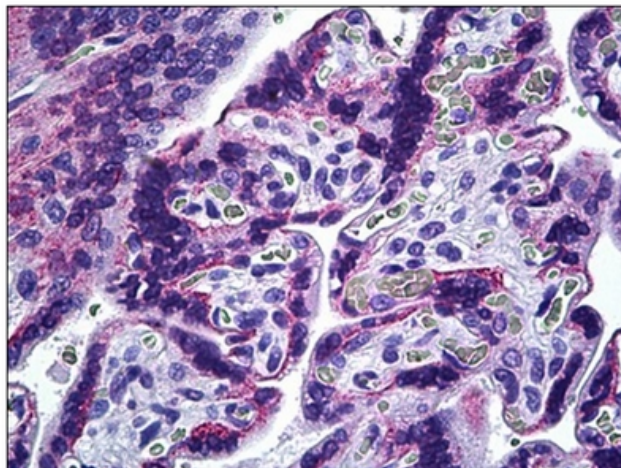
Product Type:	Primary Antibodies
Applications:	ELISA, IHC
Recommended Dilution:	<b>ELISA:</b> 1/5000. <b>Immunohistochemistry on Paraffin Sections:</b> 1/100.
Reactivity:	Human, Mouse, Rat
Host:	Rabbit
Isotype:	IgG
Clonality:	Polyclonal
Immunogen:	Synthetic peptide - KLH conjugated
Specificity:	This antibody detects endogenous levels of total CIB2 protein.
Formulation:	PBS (without Mg <sup>2+</sup> , Ca <sup>2+</sup> ), pH 7.4 containing 150 mM Sodium Chloride, 0.02% Sodium Azide and 50% Glycerol. State: Purified State: Liquid purified IgG fraction.
Concentration:	lot specific
Purification:	Immunoaffinity Chromatography.
Conjugation:	Unconjugated
Storage:	Store the antibody undiluted at 2-8°C for one month or (in aliquots) at -20°C for longer. Avoid repeated freezing and thawing.
Stability:	Shelf life: one year from despatch.
Gene Name:	calcium and integrin binding family member 2
Database Link:	<a href="#">Entrez Gene 56506 Mouse</a> <a href="#">Entrez Gene 300719 Rat</a> <a href="#">Entrez Gene 10518 Human O75838</a>
Background:	The deduced amino acid sequence of KIP2 is similar to that of KIP/CIB (46% identity, 64% similarity), calcineurin B (39% identity, 56% similarity) and calmodulin (30% identity, 42% similarity). This suggests that KIP2 may possibly be a Ca <sup>2+</sup> -binding regulatory protein that interacts with DNA-dependent protein kinase catalytic subunit (DNA-PKcs).
Synonyms:	CIB2, KIP2, Calcium and integrin-binding family member 2, Kinase-interacting protein 2, KIP 2



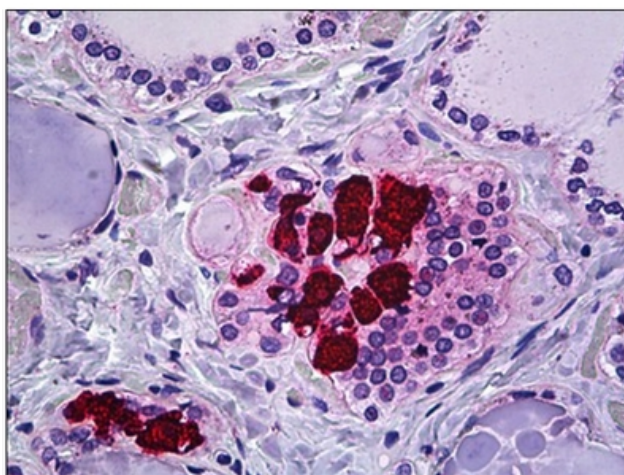
[View online »](#)

Protein Families: Druggable Genome

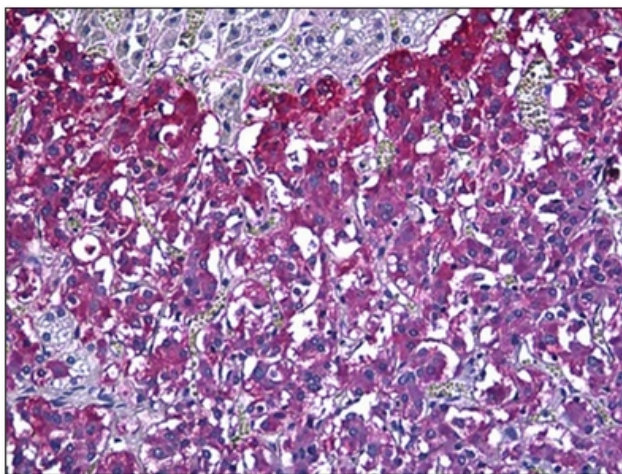
### Product images:



Human Placenta: Formalin-Fixed, Paraffin-Embedded (FFPE)



Human Thyroid, C-cells: Formalin-Fixed, Paraffin-Embedded (FFPE)



Human Adrenal Medulla: Formalin-Fixed, Paraffin-Embedded (FFPE)