

## Product datasheet for **AP31347PU-N**

### HGS Rabbit Polyclonal Antibody

#### Product data:

Product Type:	Primary Antibodies
Applications:	ELISA, IF, IHC, WB
Recommended Dilution:	<b>ELISA:</b> 1/40000. <b>Immunofluorescence:</b> 1/100 - 1/500. <b>Immunohistochemistry on Paraffin Sections:</b> 1/100. <b>Western Blot:</b> 1/500 - 1/1000.
Reactivity:	Human, Mouse, Rat
Host:	Rabbit
Isotype:	IgG
Clonality:	Polyclonal
Immunogen:	Synthetic peptide - KLH conjugated
Specificity:	This antibody detects endogenous levels of total HGS protein.
Formulation:	PBS (without Mg <sup>2+</sup> , Ca <sup>2+</sup> ), pH 7.4 containing 150 mM Sodium Chloride, 0.02% Sodium Azide and 50% Glycerol. State: Purified State: Liquid purified IgG fraction.
Concentration:	lot specific
Purification:	Immunoaffinity Chromatography.
Conjugation:	Unconjugated
Storage:	Store the antibody undiluted at 2-8°C for one month or (in aliquots) at -20°C for longer. Avoid repeated freezing and thawing.
Stability:	Shelf life: one year from despatch.
Gene Name:	hepatocyte growth factor-regulated tyrosine kinase substrate
Database Link:	<a href="#">Entrez Gene 15239 Mouse</a> <a href="#">Entrez Gene 56084 Rat</a> <a href="#">Entrez Gene 9146 Human O14964</a>



[View online »](#)

**Background:**

HGS is involved in intracellular signal transduction mediated by cytokines and growth factors. When associated with STAM, it suppresses DNA signaling upon stimulation by IL-2 and GM-CSF. It could be a direct effector of PI3-kinase in vesicular pathway via early endosomes and may regulate trafficking to early and late endosomes by recruiting clathrin. HGS may concentrate ubiquitinated receptors within clathrin-coated regions. It is involved in down-regulation of receptor tyrosine kinase via multivesicular body (MVBs) when complexed with STAM. This complex binds ubiquitin and acts as sorting machinery that recognizes ubiquitinated receptors and transfers them to further sequential lysosomal sorting/trafficking processes. HGS may contribute to the efficient recruitment of SMADs to the activin receptor complex.

**Synonyms:**

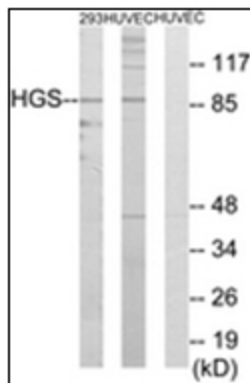
Protein pp110

**Protein Families:**

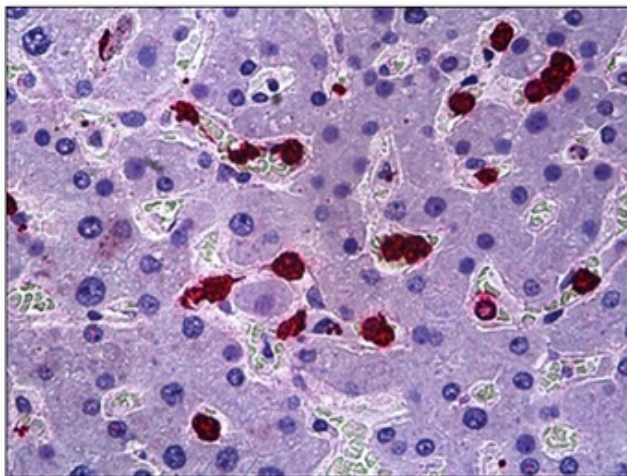
Druggable Genome

**Protein Pathways:**

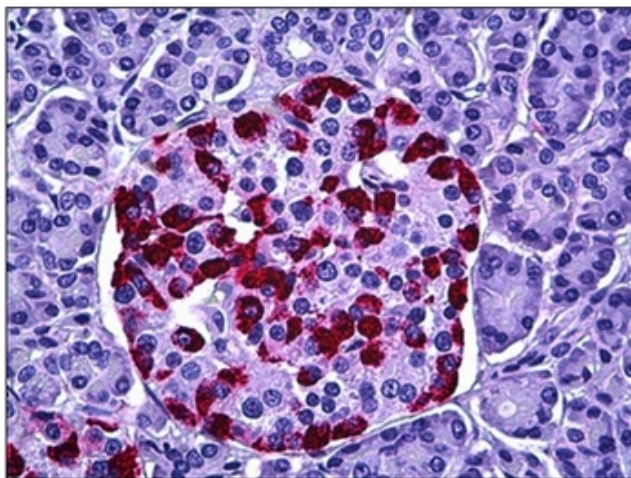
Endocytosis

**Product images:**


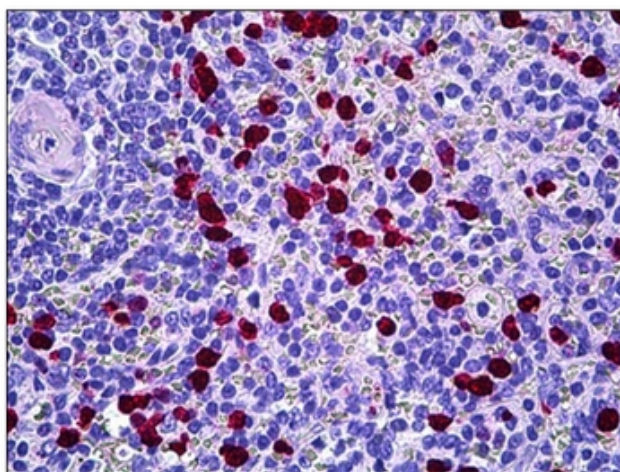
Western blot analysis of extracts from 293/HuvEc cells, using HGS Antibody. The lane on the right is treated with the synthesized peptide.



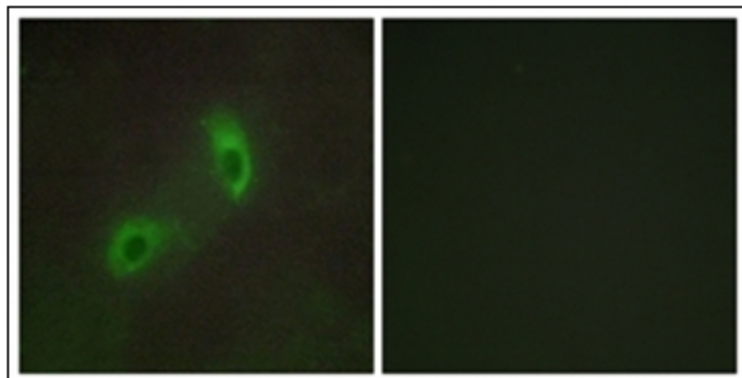
Human Liver: Formalin-Fixed, Paraffin-Embedded (FFPE)



Human Pancreas, Islets of Langerhans: Formalin-Fixed, Paraffin-Embedded (FFPE)



Human Spleen: Formalin-Fixed, Paraffin-Embedded (FFPE)



Immunofluorescence analysis of HuvEc cells, using HGS Antibody. The picture on the right is treated with the synthesized peptide.