

Product datasheet for **AP31345PU-N**

MMP11 (61-110) Rabbit Polyclonal Antibody

Product data:

Product Type:	Primary Antibodies
Applications:	ELISA, IF, IHC, WB
Recommended Dilution:	ELISA: 1/20000. Immunofluorescence: 1/100 - 1/500. Immunohistochemistry on Paraffin Sections: 1/100. Western Blot: 1/500 - 1/1000.
Reactivity:	Human, Mouse, Rat
Host:	Rabbit
Isotype:	IgG
Clonality:	Polyclonal
Immunogen:	Synthetic peptide from Human MMP-11 (aa61-110)
Specificity:	This antibody detects endogenous levels of total MMP-11 protein (aa61-110).
Formulation:	PBS (without Mg ²⁺ , Ca ²⁺), pH 7.4 containing 150 mM Sodium Chloride, 0.02% Sodium Azide and 50% Glycerol State: Aff - Purified State: Liquid purified IgG fraction
Purification:	Immunoaffinity Chromatography
Conjugation:	Unconjugated
Storage:	Store the antibody undiluted at 2-8°C for one month or (in aliquots) at -20°C for longer. Avoid repeated freezing and thawing.
Stability:	Shelf life: one year from despatch.
Gene Name:	matrix metalloproteinase 11
Database Link:	Entrez Gene 17385 Mouse Entrez Gene 25481 Rat Entrez Gene 4320 Human P24347



[View online »](#)

Background:

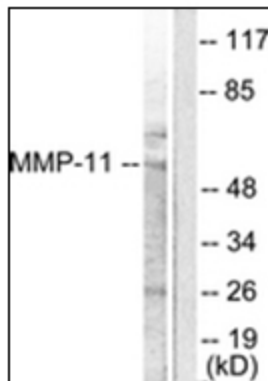
MMP11, also known as stromelysin 3, is overexpressed in the stromal cells of invasive breast carcinomas but not in the stromal cells surrounding benign breast fibroadenomas. MMP11 is secreted in its proenzyme form and the zymogen has a mass of 64 kDa. The enzyme is rapidly activated to a 58 kDa form, a 45-47 kDa size, then to a 28 kDa final active form. MMP11 is not constitutively produced by most cell types. It has been found in lung fibroblasts and gingival fibroblasts when stimulated with EGF, as well as breast tumor and osteocarcinoma cell lines.

Synonyms:

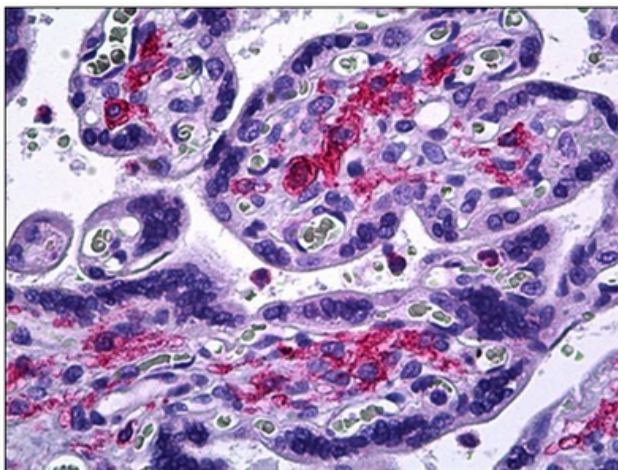
MMP11, Stromelysin-3, SL-3, ST3, STMY3, Matrix metalloproteinase-11

Protein Families:

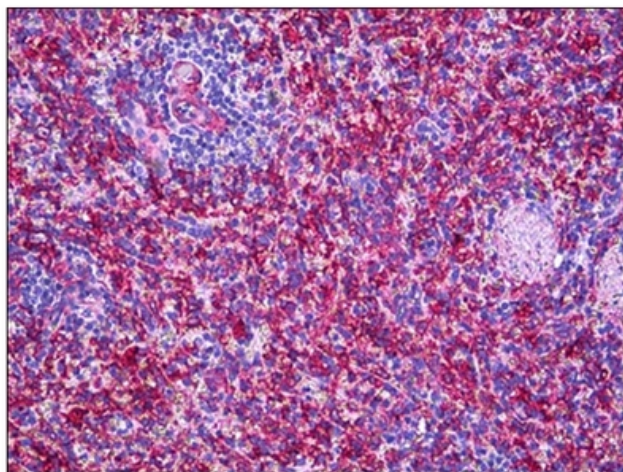
Druggable Genome, Protease

Product images:


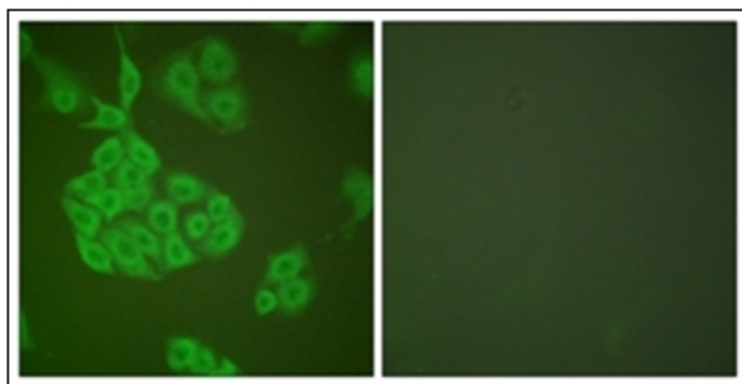
Western blot analysis of extracts from A549 cells, using MMP-11 Antibody. The lane on the right is treated with the synthesized peptide.



Human Placenta: Formalin-Fixed, Paraffin-Embedded (FFPE)



Human Spleen: Formalin-Fixed, Paraffin-Embedded (FFPE)



Immunofluorescence analysis of A549 cells, using MMP-11 Antibody. The picture on the right is treated with the synthesized peptide.