

Product datasheet for **AP31343PU-N**

GAD67 (GAD1) (+ GAD2 / GAD65) Rabbit Polyclonal Antibody

Product data:

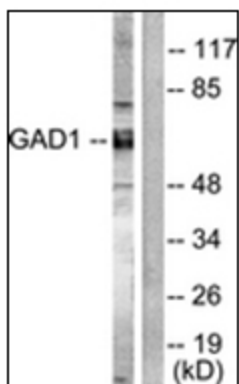
Product Type:	Primary Antibodies
Applications:	ELISA, IHC, WB
Recommended Dilution:	ELISA: 1/5000. Immunohistochemistry on Paraffin Sections: 1/100. Western Blot: 1/500 - 1/1000.
Reactivity:	Human, Mouse
Host:	Rabbit
Isotype:	IgG
Clonality:	Polyclonal
Immunogen:	Synthetic peptide - KLH conjugated
Specificity:	This antibody detects endogenous levels of total GAD1/2 protein.
Formulation:	PBS (without Mg ²⁺ , Ca ²⁺), pH 7.4 containing 150 mM Sodium Chloride, 0.02% Sodium Azide and 50% Glycerol. State: Purified State: Liquid purified IgG fraction.
Concentration:	lot specific
Purification:	Immunoaffinity Chromatography.
Conjugation:	Unconjugated
Storage:	Store the antibody undiluted at 2-8°C for one month or (in aliquots) at -20°C for longer. Avoid repeated freezing and thawing.
Stability:	Shelf life: one year from despatch.
Gene Name:	glutamate decarboxylase 1
Database Link:	Entrez Gene 14415 Mouse Entrez Gene 2571 Human Q99259
Synonyms:	Glutamate decarboxylase 1, GAD-67
Protein Families:	Druggable Genome



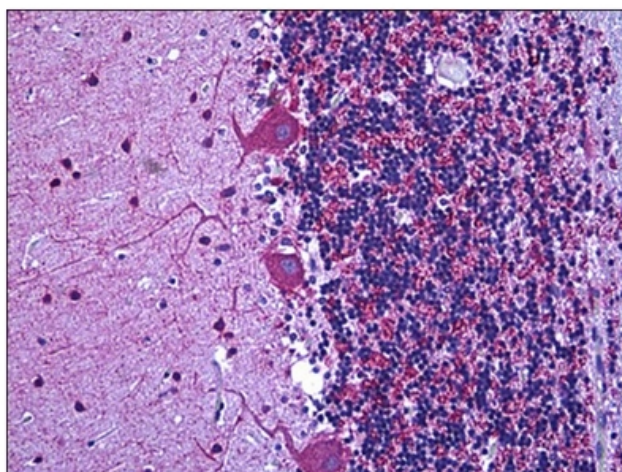
[View online »](#)

Protein Pathways:

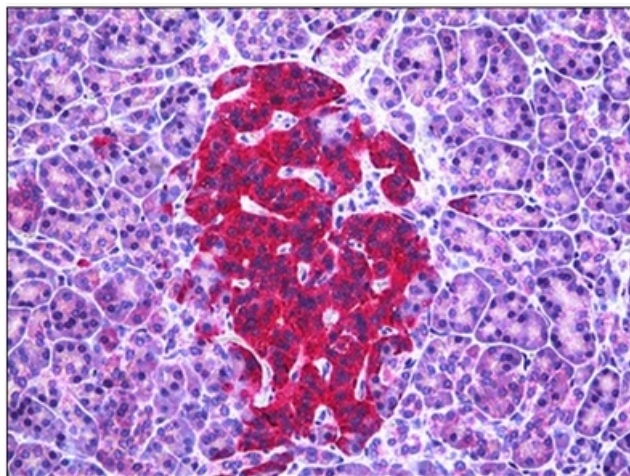
Alanine, aspartate and glutamate metabolism, beta-Alanine metabolism, Butanoate metabolism, Metabolic pathways, Taurine and hypotaurine metabolism, Type I diabetes mellitus

Product images:

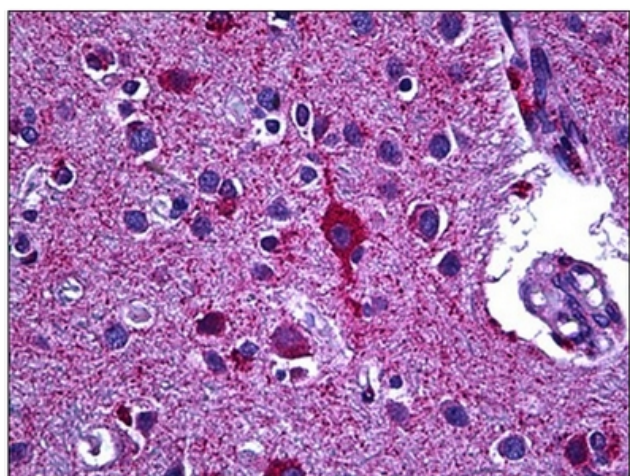
Western blot analysis of extracts from mouse brain cells, using GAD1/2 Antibody. The lane on the right is treated with the synthesized peptide.



Human Brain Cerebellum: Formalin-Fixed, Paraffin-Embedded (FFPE)



Human Pancreas, Islets of Langerhans: Formalin-Fixed, Paraffin-Embedded (FFPE)



Human Brain, Cortex: Formalin-Fixed, Paraffin-Embedded (FFPE)