

Product datasheet for **AP31340PU-N**

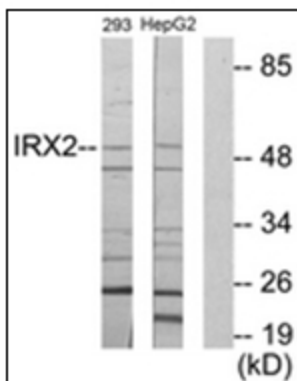
IRX2 Rabbit Polyclonal Antibody

Product data:

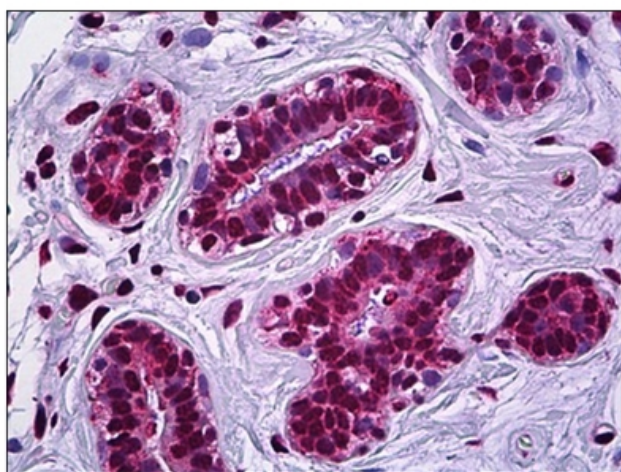
Product Type:	Primary Antibodies
Applications:	ELISA, IF, IHC, WB
Recommended Dilution:	ELISA: 1/5000. Immunofluorescence: 1/100 - 1/500. Immunohistochemistry on Paraffin Sections: 1/200. Western Blot: 1/500 - 1/1000.
Reactivity:	Human
Host:	Rabbit
Isotype:	IgG
Clonality:	Polyclonal
Immunogen:	Synthetic peptide - KLH conjugated
Specificity:	This antibody detects endogenous levels of total IRX2 protein.
Formulation:	PBS (without Mg ²⁺ , Ca ²⁺), pH 7.4 containing 150 mM Sodium Chloride, 0.02% Sodium Azide and 50% Glycerol. State: Purified State: Liquid purified IgG fraction.
Concentration:	lot specific
Purification:	Immunoaffinity Chromatography.
Conjugation:	Unconjugated
Storage:	Store the antibody undiluted at 2-8°C for one month or (in aliquots) at -20°C for longer. Avoid repeated freezing and thawing.
Stability:	Shelf life: one year from despatch.
Gene Name:	iroquois homeobox 2
Database Link:	Entrez Gene 153572 Human Q9BZ11
Synonyms:	Iroquois homeobox protein 2, IRX-2
Protein Families:	Transcription Factors



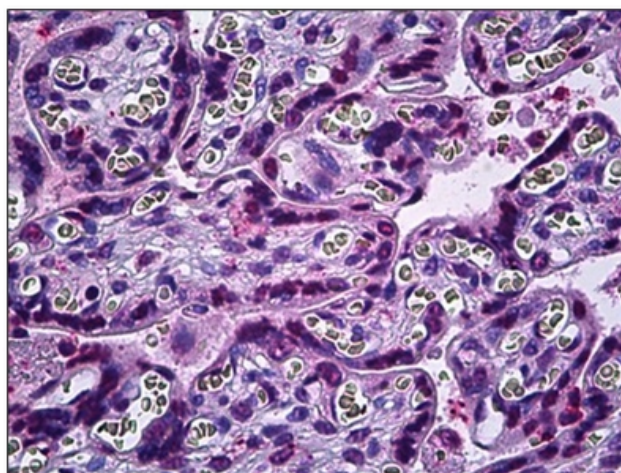
[View online »](#)

Product images:


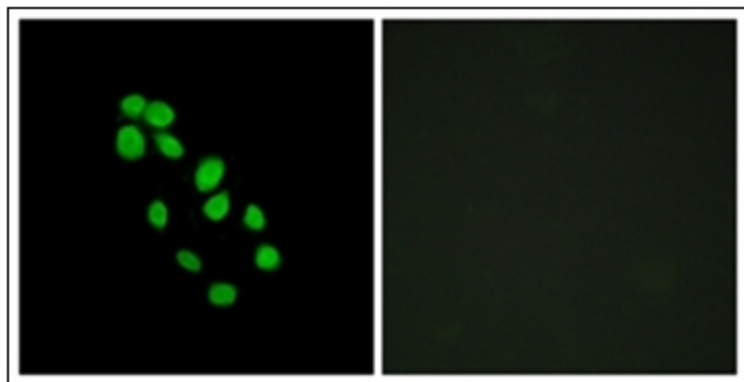
Western blot analysis of extracts from 293/HepG2 cells, using IRX2 Antibody. The lane on the right is treated with the synthesized peptide.



Human Breast: Formalin-Fixed, Paraffin-Embedded (FFPE)



Human Placenta: Formalin-Fixed, Paraffin-Embedded (FFPE)



Immunofluorescence analysis of HepG2 cells, using IRX2 Antibody. The picture on the right is treated with the synthesized peptide.