

## Product datasheet for **AP31339PU-N**

### IRS1 Rabbit Polyclonal Antibody

#### Product data:

Product Type:	Primary Antibodies
Applications:	ELISA, IF, IHC
Recommended Dilution:	<b>ELISA:</b> 1/1000. <b>Immunofluorescence:</b> 1/100 - 1/500. <b>Immunohistochemistry on Paraffin Sections:</b> 1/100.
Reactivity:	Human, Mouse, Rat
Host:	Rabbit
Isotype:	IgG
Clonality:	Polyclonal
Immunogen:	Synthetic peptide - KLH conjugated
Specificity:	This antibody detects endogenous levels of total IRS1 protein.
Formulation:	PBS (without Mg <sup>2+</sup> , Ca <sup>2+</sup> ), pH 7.4 containing 150 mM Sodium Chloride, 0.02% Sodium Azide and 50% Glycerol. State: Purified State: Liquid purified IgG fraction.
Concentration:	lot specific
Purification:	Immunoaffinity Chromatography.
Conjugation:	Unconjugated
Storage:	Store the antibody undiluted at 2-8°C for one month or (in aliquots) at -20°C for longer. Avoid repeated freezing and thawing.
Stability:	Shelf life: one year from despatch.
Gene Name:	insulin receptor substrate 1
Database Link:	<u><a href="#">Entrez Gene 16367 Mouse</a></u> <u><a href="#">Entrez Gene 25467 Rat</a></u> <u><a href="#">Entrez Gene 3667 Human P35568</a></u>



[View online »](#)

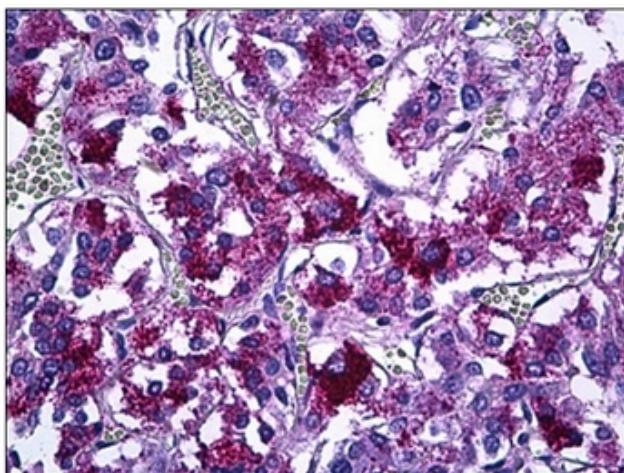
**Background:** Insulin receptor substrates (IRS) subtypes are responsible for several insulin related activities, such as glucose homeostasis, cell growth, cell transformation, apoptosis and insulin signal transduction. The balance between Ser/Thr phosphorylation of IRS has been demonstrated to be an important regulator of insulin signaling. IRS1 has also been shown to be constitutively activated in cancers such as breast cancer, Wilm's tumors, and adrenal cortical carcinomas.

**Synonyms:** Insulin receptor substrate 1, IRS-1

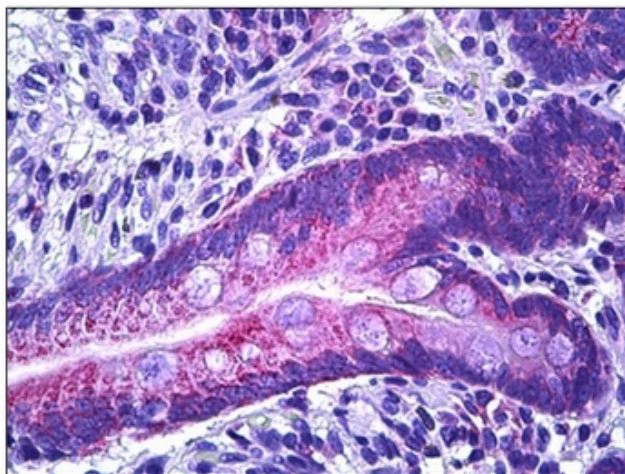
**Protein Families:** Druggable Genome

**Protein Pathways:** Adipocytokine signaling pathway, Insulin signaling pathway, Neurotrophin signaling pathway, Type II diabetes mellitus

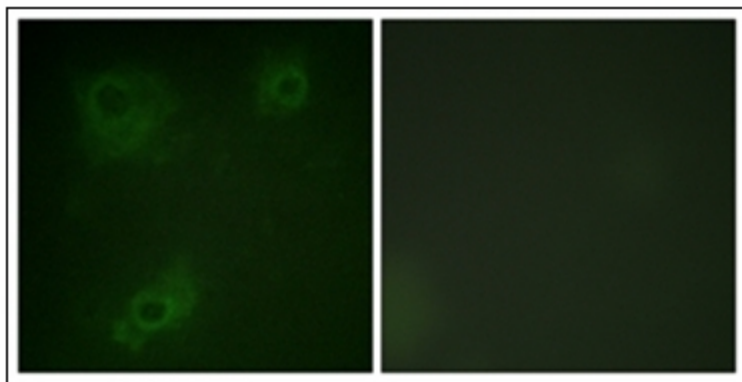
### Product images:



Human Adrenal Medulla: Formalin-Fixed, Paraffin-Embedded (FFPE)



Human Intestine, Epithelium: Formalin-Fixed, Paraffin-Embedded (FFPE)



Immunofluorescence analysis of COS7 cells, using IRS-1 (Ab-323) Antibody. The picture on the right is treated with the synthesized peptide.