

Product datasheet for **AP31337PU-N**

ATP5A (ATP5A1) Rabbit Polyclonal Antibody

Product data:

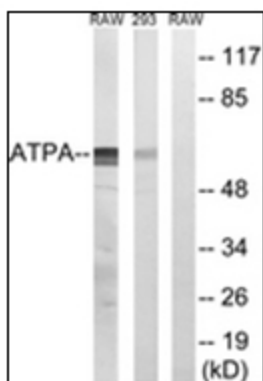
| | |
|-----------------------|---|
| Product Type: | Primary Antibodies |
| Applications: | ELISA, IHC, WB |
| Recommended Dilution: | ELISA: 1/40000. Immunohistochemistry on Paraffin Sections: 1/200. Western Blot: 1/500 - 1/1000. |
| Reactivity: | Human, Mouse, Rat |
| Host: | Rabbit |
| Isotype: | IgG |
| Clonality: | Polyclonal |
| Immunogen: | Synthetic peptide from Human ATP5A1 protein (aa 201-250). |
| Specificity: | This antibody detects endogenous levels of ATP5A1 protein. |
| Formulation: | PBS (without Mg ²⁺ , Ca ²⁺), pH 7.4 containing 150 mM Sodium Chloride, 0.02% Sodium Azide and 50% Glycerol. State: Purified State: Liquid purified IgG fraction. |
| Concentration: | lot specific |
| Purification: | Immunoaffinity Chromatography. |
| Conjugation: | Unconjugated |
| Storage: | Store the antibody undiluted at 2-8°C for one month or (in aliquots) at -20°C for longer. Avoid repeated freezing and thawing. |
| Stability: | Shelf life: one year from despatch. |
| Gene Name: | ATP synthase, H ⁺ transporting, mitochondrial F1 complex, alpha subunit 1, cardiac muscle |
| Database Link: | Entrez Gene 11946 Mouse Entrez Gene 65262 Rat Entrez Gene 498 Human P25705 |
| Synonyms: | ATP5A1, ATP5A, ATP5AL2, ATPM, F1F0 ATP synthase alpha subunit, Complex V alpha subunit |
| Protein Families: | Druggable Genome |



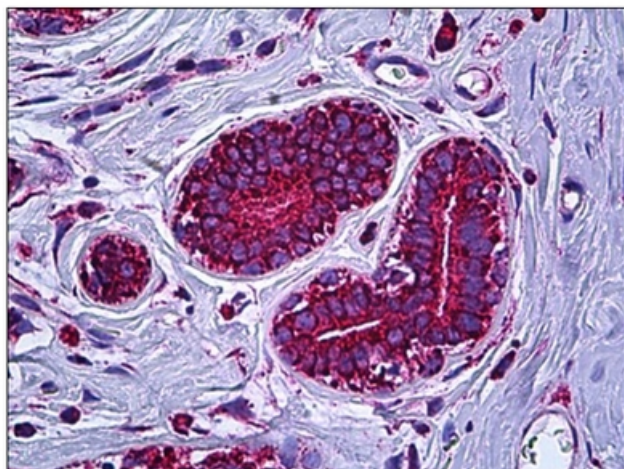
[View online »](#)

Protein Pathways: Alzheimer's disease, Huntington's disease, Metabolic pathways, Oxidative phosphorylation, Parkinson's disease

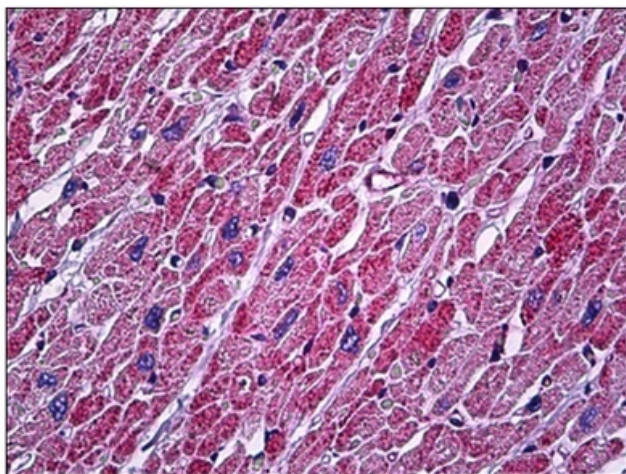
Product images:



Western blot analysis of extracts from 293/RAW264.7 cells, using ATP5A1 Antibody. The lane on the right is treated with the synthesized peptide.



Human Breast: Formalin-Fixed, Paraffin-Embedded (FFPE)



Human Heart: Formalin-Fixed, Paraffin-Embedded (FFPE)