

## Product datasheet for **AP31336PU-N**

### p27 KIP 1 (CDKN1B) pThr187 Rabbit Polyclonal Antibody

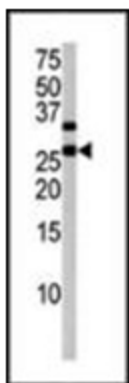
#### Product data:

|                       |   |
|-----------------------|---|
| Product Type:         | Primary Antibodies  |
| Applications:         | IHC, WB   |
| Recommended Dilution: | <b>Immunohistochemistry on Paraffin Sections:</b> 5 µg/ml.<br><b>Western Blot:</b> 1/1000.                                |
| Reactivity:           | Human   |
| Host:                 | Rabbit  |
| Isotype:              | IgG   |
| Clonality:            | Polyclonal  |
| Immunogen:            | kLH conjugated corresponding to amino acid residues surrounding Thr187 of Human p27Kip1.                                  |
| Specificity:          | Recognizes CDKN1B / p27 Kip1 pThr187  |
| Formulation:          | PBS containing 0.09% Sodium Azide as preservative<br>State: Purified<br>State: Liquid purified IgG fraction               |
| Purification:         | Immunoaffinity Chromatography   |
| Conjugation:          | Unconjugated  |
| Storage:              | Store undiluted at 2-8°C for one month or (in aliquots) at -20°C for longer.<br>Avoid repeated freezing and thawing.      |
| Stability:            | Shelf life: one year from despatch.   |
| Gene Name:            | cyclin-dependent kinase inhibitor 1B  |
| Database Link:        | <a href="#">Entrez Gene 1027 Human P46527</a>   |
| Synonyms:             | p27Kip1   |
| Protein Families:     | Druggable Genome  |
| Protein Pathways:     | Cell cycle, Chronic myeloid leukemia, ErbB signaling pathway, Pathways in cancer, Prostate cancer, Small cell lung cancer |

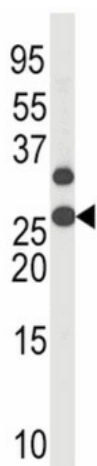


[View online »](#)

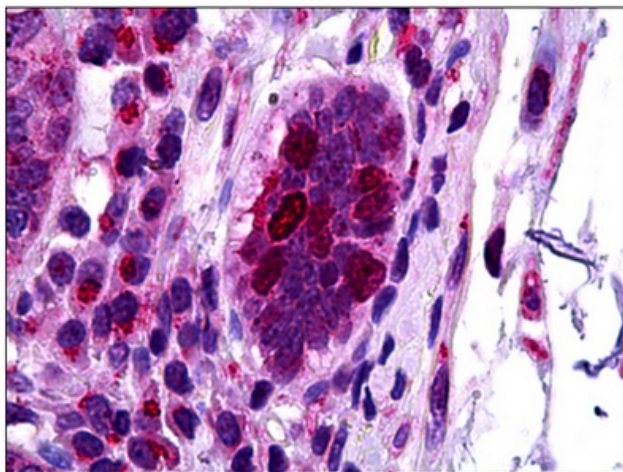
**Product images:**



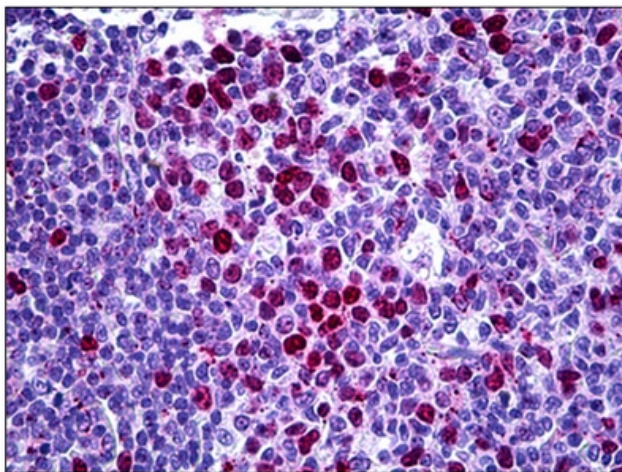
Western blot analysis with anti-Phospho-p27Kip1 in HL60 tissue lysate.



The anti-Phospho-p27Kip1-T187 antibody is used in Western blot to detect Phospho-p27Kip1-T187 in HL60 tissue lysate.



Human Intestine: Formalin-Fixed, Paraffin-Embedded (FFPE)



Human Tonsil: Formalin-Fixed, Paraffin-Embedded (FFPE)