

Product datasheet for **AP31335PU-N**

RHOH (C-term) Rabbit Polyclonal Antibody

Product data:

Product Type:	Primary Antibodies
Applications:	ELISA, IF, IHC, WB
Recommended Dilution:	ELISA: 1/5000. Immunofluorescence: 1/100 - 1/500. Immunohistochemistry on Paraffin Sections: 1/200. Western Blot: 1/500 - 1/1000.
Reactivity:	Human, Mouse, Rat
Host:	Rabbit
Isotype:	IgG
Clonality:	Polyclonal
Immunogen:	Synthetic peptide - KLH conjugated
Specificity:	This antibody detects endogenous levels of total RhoH protein.
Formulation:	PBS (without Mg ²⁺ , Ca ²⁺), pH 7.4 containing 150 mM Sodium Chloride, 0.02% Sodium Azide and 50% Glycerol. State: Purified State: Liquid purified IgG fraction.
Concentration:	lot specific
Purification:	Immunoaffinity Chromatography.
Conjugation:	Unconjugated
Storage:	Store the antibody undiluted at 2-8°C for one month or (in aliquots) at -20°C for longer. Avoid repeated freezing and thawing.
Stability:	Shelf life: one year from despatch.
Gene Name:	ras homolog family member H
Database Link:	Entrez Gene 74734 Mouse Entrez Gene 305341 Rat Entrez Gene 399 Human Q15669



[View online »](#)

Background:

The Rho subfamily of small GTP-binding proteins mediates many fundamental cellular functions. The commonly studied members (Rho, Rac, and CDC42) regulate actin reorganization and affect diverse cellular responses, including adhesion, cytokinesis, and motility. RhoH, also known as TTF (Translocation Three Four), Rho-related GTP-binding protein and ras homolog gene family member H, is unlike most other small G proteins. Most small G proteins are expressed ubiquitously, however, Rho H is expressed only in hemopoietic cells and tissues. Translocations and a high frequency of Rho H mutation have been detected in primary lymphoma cells. Rho H expression has also been observed in activated neutrophils. RhoH is GTPase deficient, remaining in a GTP-bound activated state without cycling. Rho H may be involved in the functional differentiation of T cells and in cytoskeleton organization. The RhoH/TTF (ARHH) gene maps to chromosome 4p13 and encodes a 191 -amino acid polypeptide.

Synonyms:

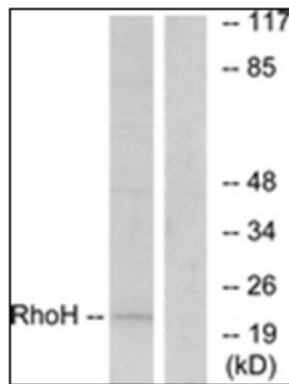
ARHH, TTF

Protein Families:

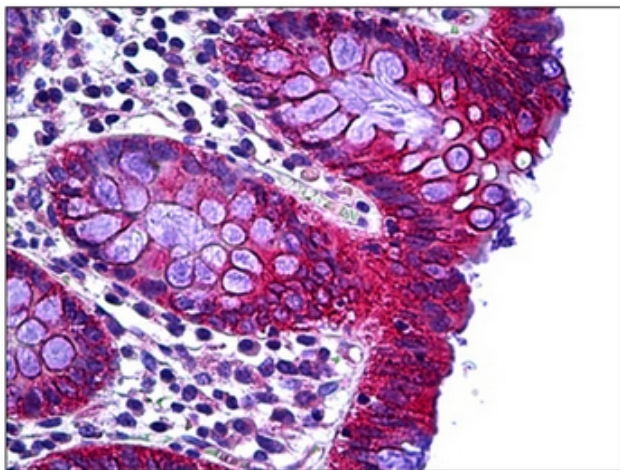
Transcription Factors

Protein Pathways:

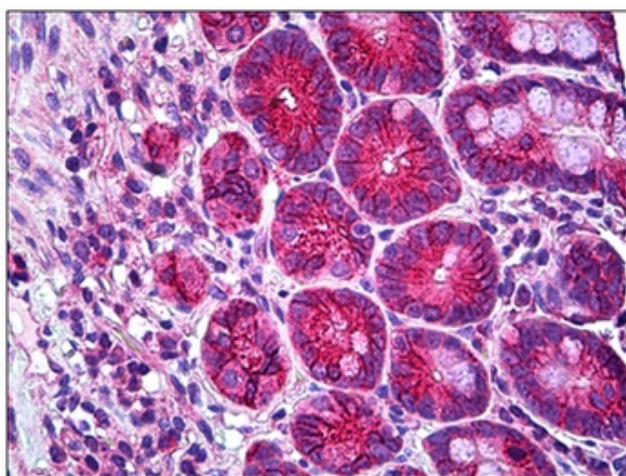
Leukocyte transendothelial migration

Product images:

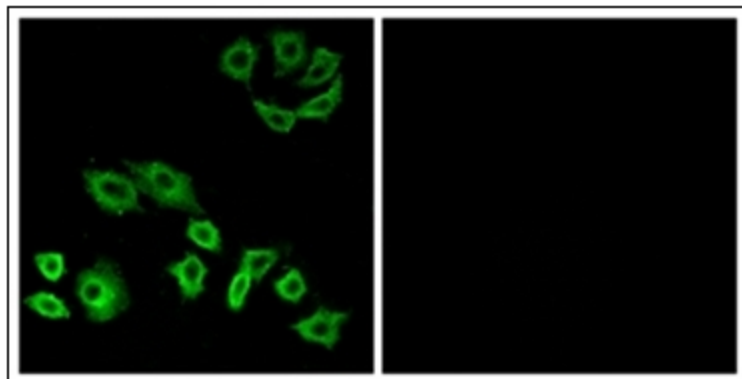
Western blot analysis of extracts from HT-29 cells, using RhoH Antibody. The lane on the right is treated with the synthesized peptide.



Human Colon: Formalin-Fixed, Paraffin-Embedded (FFPE)



Human Small Intestine: Formalin-Fixed, Paraffin-Embedded (FFPE)



Immunofluorescence analysis of A549 cells, using RhoH Antibody. The picture on the right is treated with the synthesized peptide.