

Product datasheet for **AP31334PU-N**

Vinculin (VCL) Rabbit Polyclonal Antibody

Product data:

Product Type:	Primary Antibodies
Applications:	ELISA, IF, IHC, WB
Recommended Dilution:	ELISA: 1/10000. Immunofluorescence: 1/100 - 1/500. Immunohistochemistry on Paraffin Sections: 1/100. Western Blot: 1/500 - 1/1000.
Reactivity:	Human, Mouse, Rat
Host:	Rabbit
Isotype:	IgG
Clonality:	Polyclonal
Immunogen:	Synthetic peptide - KLH conjugated
Specificity:	This antibody detects endogenous levels of total Vinculin protein.
Formulation:	PBS (without Mg ²⁺ , Ca ²⁺), pH 7.4 containing 150 mM Sodium Chloride, 0.02% Sodium Azide and 50% Glycerol. State: Purified State: Liquid purified IgG fraction.
Concentration:	lot specific
Purification:	Immunoaffinity Chromatography.
Conjugation:	Unconjugated
Storage:	Store the antibody undiluted at 2-8°C for one month or (in aliquots) at -20°C for longer. Avoid repeated freezing and thawing.
Stability:	Shelf life: one year from despatch.
Gene Name:	vinculin
Database Link:	Entrez Gene 22330 Mouse Entrez Gene 305679 Rat Entrez Gene 7414 Human P18206



[View online »](#)

Background:

Vinculin is a cytoskeletal protein associated with cell-cell and cell-matrix junctions, where it is thought to function as one of several interacting proteins involved in anchoring F-actin to the membrane. Multiple alternatively spliced transcript variants have been found for this gene, but the biological validity of some variants has not been determined. Human vinculin protein exhibits a greater than 95% sequence identity to the chicken vinculin protein.

Synonyms:

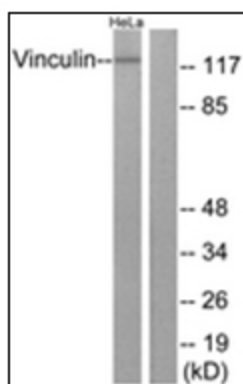
Metavinculin

Protein Families:

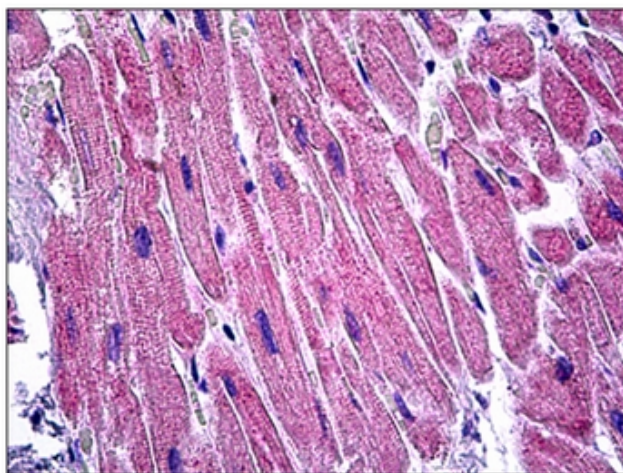
Druggable Genome

Protein Pathways:

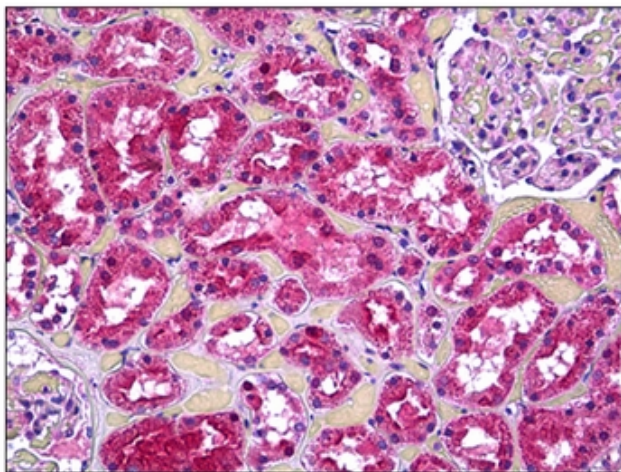
Adherens junction, Focal adhesion, Leukocyte transendothelial migration, Regulation of actin cytoskeleton

Product images:

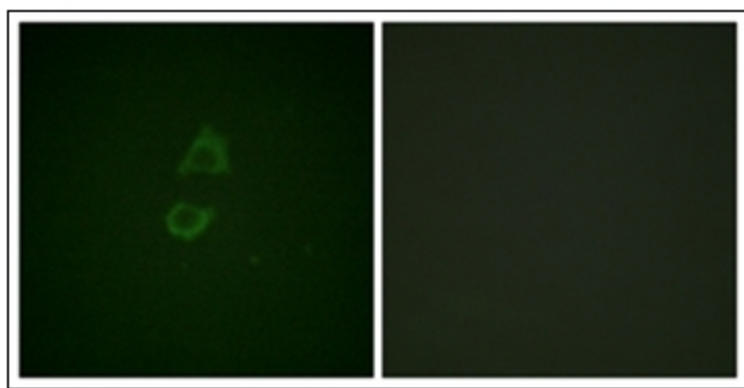
Western blot analysis of extracts from HeLa cells, treated with forskolin 40nM 30 minutes, using Vinculin Antibody. The lane on the right is treated with the synthesized peptide.



Human Heart: Formalin-Fixed, Paraffin-Embedded (FFPE)



Human Kidney, Tubules: Formalin-Fixed, Paraffin-Embedded (FFPE)



Immunofluorescence analysis of A549 cells, using Vinculin Antibody. The picture on the right is treated with the synthesized peptide.