

Product datasheet for **AP31328PU-N**

Moesin (MSN) (524-573) Rabbit Polyclonal Antibody

Product data:

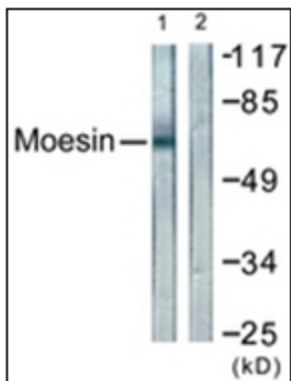
Product Type:	Primary Antibodies
Applications:	ELISA, IHC, WB
Recommended Dilution:	ELISA: 1/20000. Immunohistochemistry on Paraffin Sections: 1/100. Western Blot: 1/500 - 1/1000.
Reactivity:	Human, Mouse, Rat
Host:	Rabbit
Isotype:	IgG
Clonality:	Polyclonal
Immunogen:	Synthetic peptide from Human Moesin/Ezrin/Radixin (aa524-573). Epitope: aa524-573
Specificity:	This antibody detects endogenous levels of total Moesin/Ezrin/Radixin protein.
Formulation:	PBS (without Mg ²⁺ , Ca ²⁺), pH 7.4 with 150 mM Sodium Chloride, 0.02% Sodium Azide and 50% Glycerol State: Purified State: Liquid purified IgG fraction
Concentration:	lot specific
Purification:	Immunoaffinity Chromatography
Conjugation:	Unconjugated
Storage:	Store undiluted at 2-8°C for one month or (in aliquots) at -20°C for longer. Avoid repeated freezing and thawing.
Stability:	Shelf life: one year from despatch.
Gene Name:	moesin
Database Link:	Entrez Gene 17698 Mouse Entrez Gene 81521 Rat Entrez Gene 4478 Human P26038
Synonyms:	moesin
Protein Families:	Druggable Genome



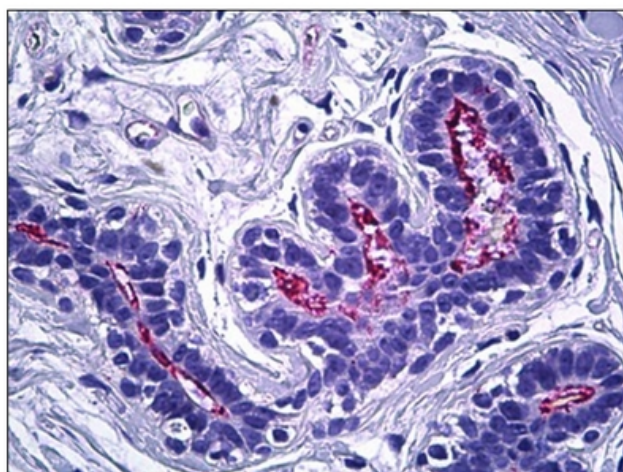
[View online »](#)

Protein Pathways: Leukocyte transendothelial migration, Regulation of actin cytoskeleton

Product images:



Western blot analysis of extracts from NIH-3T3 cells, using Moesin/Ezrin/Radixin Antibody. The lane on the right is treated with the synthesized peptide.



Human Breast, Epithelium: Formalin-Fixed, Paraffin-Embedded (FFPE)