

## Product datasheet for **AP31323PU-N**

### CD31 (PECAM1) (C-term) Rabbit Polyclonal Antibody

#### Product data:

Product Type:	Primary Antibodies
Applications:	ELISA, IF, IHC, WB
Recommended Dilution:	<b>ELISA:</b> 1/20000. <b>Immunofluorescence:</b> 1/100 - 1/500. <b>Immunohistochemistry on Paraffin Sections:</b> 10 µg/ml. <b>Western Blot:</b> 1/500 - 1/1000.
Reactivity:	Human, Mouse
Host:	Rabbit
Isotype:	IgG
Clonality:	Polyclonal
Immunogen:	Synthetic peptide from Human PECAM-1. Epitope: C-Terminus.
Specificity:	This antibody detects endogenous levels of total PECAM-1 protein.
Formulation:	PBS (without Mg <sup>2+</sup> , Ca <sup>2+</sup> ), pH 7.4 containing 150 mM Sodium Chloride, 0.02% Sodium Azide and 50% Glycerol. State: Purified State: Liquid purified IgG fraction.
Concentration:	lot specific
Purification:	Immunoaffinity Chromatography.
Conjugation:	Unconjugated
Storage:	Store the antibody undiluted at 2-8°C for one month or (in aliquots) at -20°C for longer. Avoid repeated freezing and thawing.
Stability:	Shelf life: one year from despatch.
Gene Name:	platelet and endothelial cell adhesion molecule 1
Database Link:	<a href="#">Entrez Gene 18613 Mouse</a> <a href="#">Entrez Gene 5175 Human</a> <a href="#">P16284</a>



[View online »](#)

**Background:**

CD31 (PECAM1) is found on the surface of platelets, monocytes, neutrophils, and some types of T-cells, and makes up a large portion of endothelial cell intercellular junctions. CD31 is a member of the immunoglobulin superfamily and is likely involved in leukocyte migration, angiogenesis, and integrin activation.

**Synonyms:**

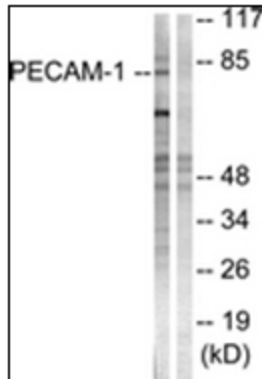
PECAM-1, EndoCAM, GPIIA'

**Protein Families:**

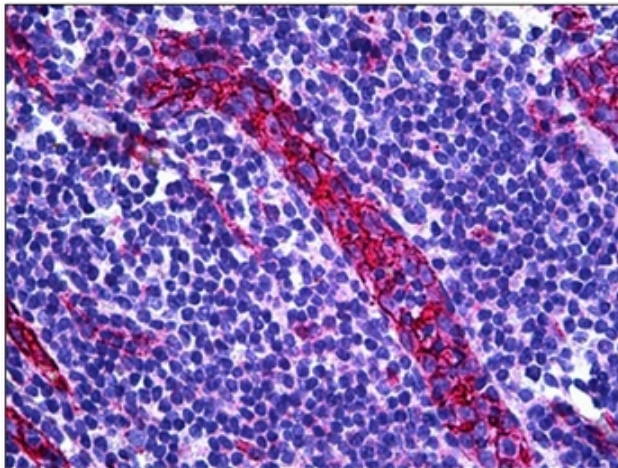
Druggable Genome, ES Cell Differentiation/IPS, Transmembrane

**Protein Pathways:**

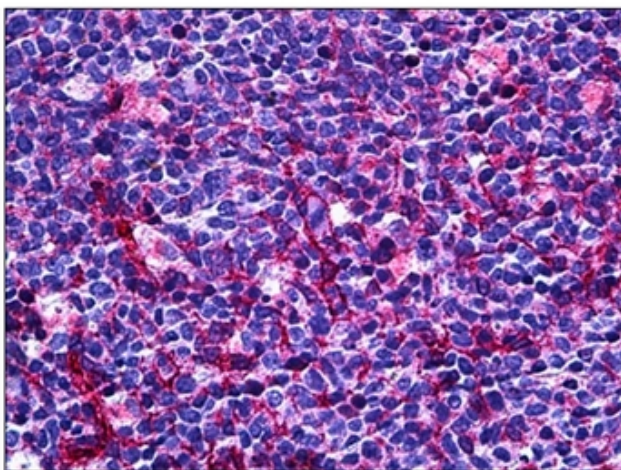
Cell adhesion molecules (CAMs), Leukocyte transendothelial migration

**Product images:**


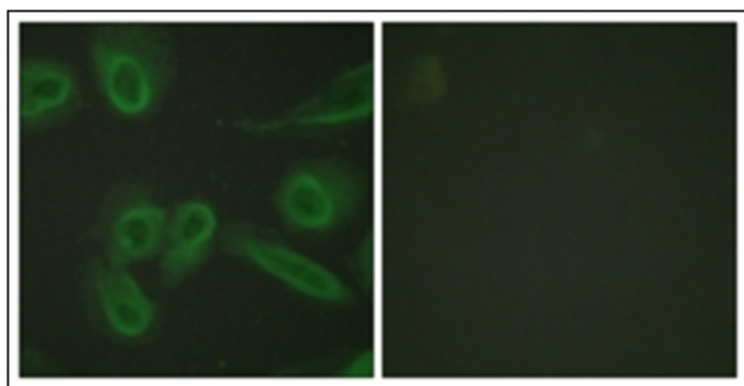
Western blot analysis of extracts from Jurkat cells, using PECAM-1 Antibody. The lane on the right is treated with the synthesized peptide.



Human Tonsil, Vessel: Formalin-Fixed, Paraffin-Embedded (FFPE)



Human Tonsil: Formalin-Fixed, Paraffin-Embedded (FFPE)



Immunofluorescence analysis of HeLa cells, using PECAM-1 Antibody. The picture on the right is treated with the synthesized peptide.