

Product datasheet for **AP31322PU-N**

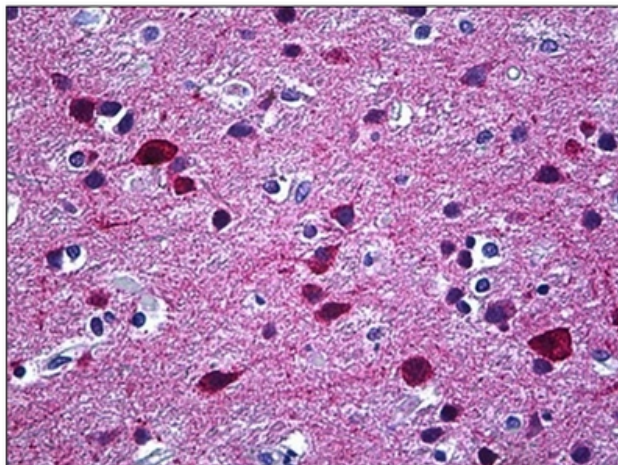
Munc18 1 (STXBP1) Rabbit Polyclonal Antibody

Product data:

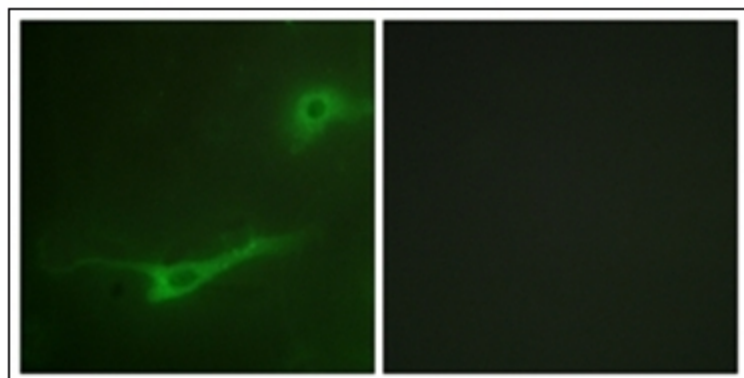
Product Type:	Primary Antibodies
Applications:	ELISA, IF, IHC
Recommended Dilution:	ELISA: 1/40000. Immunofluorescence: 1/100 - 1/500. Immunohistochemistry on Paraffin Sections: 1/100.
Reactivity:	Human, Mouse, Rat
Host:	Rabbit
Isotype:	IgG
Clonality:	Polyclonal
Immunogen:	Synthetic peptide - KLH conjugated
Specificity:	This antibody detects endogenous levels of total MUNC-18a protein.
Formulation:	PBS (without Mg ²⁺ , Ca ²⁺), pH 7.4 containing 150 mM Sodium Chloride, 0.02% Sodium Azide and 50% Glycerol. State: Purified State: Liquid purified IgG fraction.
Purification:	Immunoaffinity Chromatography.
Conjugation:	Unconjugated
Storage:	Store the antibody undiluted at 2-8°C for one month or (in aliquots) at -20°C for longer. Avoid repeated freezing and thawing.
Stability:	Shelf life: one year from despatch.
Gene Name:	syntaxin binding protein 1
Database Link:	Entrez Gene 20910 Mouse Entrez Gene 25558 Rat Entrez Gene 6812 Human P61764
Synonyms:	Unc-18 homolog, Unc-18-1, Unc-18A, N-Sec1, Syntaxin-binding protein 1



[View online »](#)

Product images:

Human Brain, Cortex: Formalin-Fixed, Paraffin-Embedded (FFPE)



Immunofluorescence analysis of NIH-3T3 cells, using MUNC-18a Antibody. The picture on the right is treated with the synthesized peptide.