

Product datasheet for **AP31286PU-N**

Complement C3 (C3) Sheep Polyclonal Antibody

Product data:

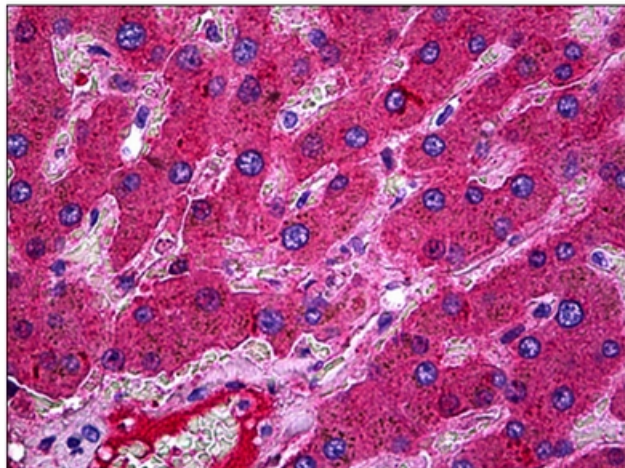
| | |
|-----------------------|---|
| Product Type: | Primary Antibodies |
| Applications: | ELISA, IHC |
| Recommended Dilution: | ELISA: 1/400. Immunohistochemistry on Frozen Sections: 1/50. Immunohistochemistry on Paraffin Sections: 5 µg/ml. |
| Reactivity: | Human |
| Host: | Sheep |
| Isotype: | IgG |
| Clonality: | Polyclonal |
| Immunogen: | Human Complement 3c |
| Specificity: | This antibody detects Human Complement 3c, a polypeptide fragment which is present in C3. Minimal cross reactivity with related serum proteins. |
| Formulation: | PBS containing 0.09% Sodium Azide as preservative State: Purified State: Liquid purified IgG fraction |
| Purification: | Protein G Chromatography |
| Conjugation: | Unconjugated |
| Storage: | Store the antibody undiluted at 2-8°C for one month or (in aliquots) at -20°C for longer. Avoid repeated freezing and thawing. |
| Stability: | Shelf life: one year from despatch. |
| Gene Name: | complement component 3 |
| Database Link: | Entrez Gene 718 Human P01024 |
| Background: | Complement component C3 plays a central role in the activation of complement system. Its activation is required for both classical and alternative complement activation pathways. People with C3 deficiency are susceptible to bacteria infection. |
| Synonyms: | CPAMD1, Complement component 3 |
| Protein Families: | Druggable Genome |



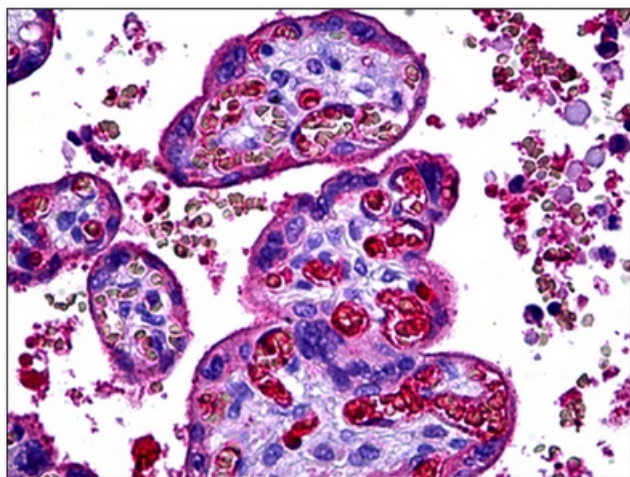
[View online »](#)

Protein Pathways: Complement and coagulation cascades, Systemic lupus erythematosus

Product images:



Human Liver: Formalin-Fixed, Paraffin-Embedded (FFPE).



Human Placenta: Formalin-Fixed, Paraffin-Embedded (FFPE).