

## Product datasheet for **AP31284PU-N**

### **PBR (TSPO) (C-term) Goat Polyclonal Antibody**

#### **Product data:**

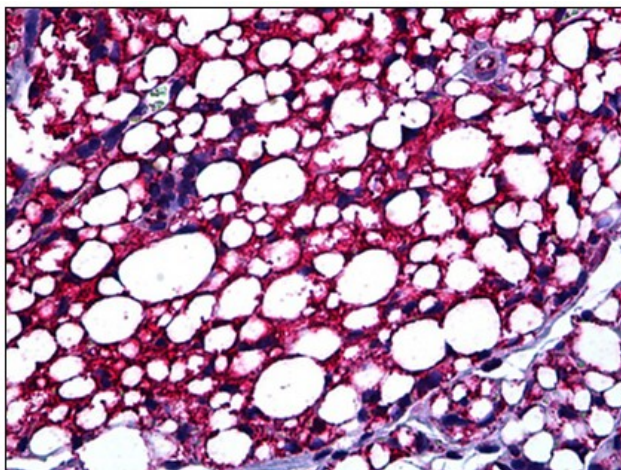
Product Type:	Primary Antibodies
Applications:	ELISA, IHC, WB
Recommended Dilution:	<b>ELISA:</b> 1/16000. <b>Immunohistochemistry on Paraffin Sections:</b> 3.75 µg/ml. <b>Western Blot:</b> 0.5 - 1 µg/ml.
Reactivity:	Human, Mouse, Rat
Host:	Goat
Clonality:	Polyclonal
Immunogen:	Synthetic peptide C-RDNSGRRGG SRLPE from the C-terminus of Mouse TSPO (NP_033905.3). <b>Percent identity with other species by BLAST analysis:</b> Mouse (100%), Rat (93%). <b>Epitope:</b> C-Terminus
Specificity:	This antibody reacts to the C-term of TSPO.
Formulation:	Tris saline buffer, pH~7.3 State: Purified State: Liquid purified Ig fraction Stabilizer: 0.5% BSA Preservative: 0.02% Sodium Azide
Concentration:	lot specific
Purification:	Immunoaffinity Chromatography
Conjugation:	Unconjugated
Storage:	Store undiluted at 2-8°C for one month or (in aliquots) at -20°C for longer. Avoid repeated freezing and thawing.
Stability:	Shelf life: one year from despatch.
Gene Name:	translocator protein
Database Link:	<a href="#">Entrez Gene 12257 Mouse</a> <a href="#">Entrez Gene 24230 Rat</a> <a href="#">Entrez Gene 706 Human</a> <a href="#">P30536</a>
Synonyms:	MBR, Translocator protein, Peripheral-type benzodiazepine receptor, PKBS, PBR
Protein Families:	Druggable Genome, Transmembrane



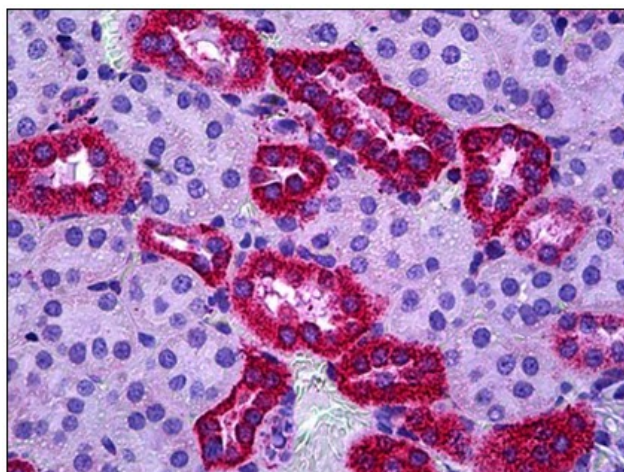
[View online »](#)

Protein Pathways: Neuroactive ligand-receptor interaction

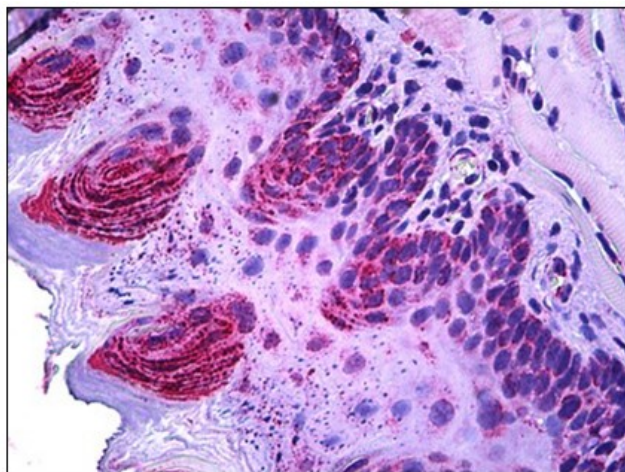
**Product images:**



Human Adipose: Formalin-Fixed, Paraffin-Embedded (FFPE)



Human Renal Tubules: Formalin-Fixed, Paraffin-Embedded (FFPE)



Human Squamous Epithelium: Formalin-Fixed, Paraffin-Embedded (FFPE)