

Product datasheet for **AP31272PU-N**

Smad Interacting Protein 1 (ZEB2) (N-term) Rabbit Polyclonal Antibody

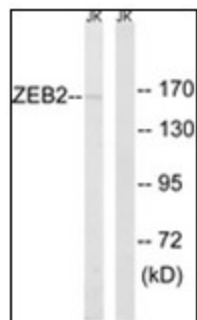
Product data:

| | |
|-----------------------|---|
| Product Type: | Primary Antibodies |
| Applications: | ELISA, IHC, WB |
| Recommended Dilution: | ELISA: 1/10000. Immunohistochemistry on Paraffin Sections: 1/200. Western Blot: 1/500 - 1/1000. |
| Reactivity: | Human, Mouse, Rat |
| Host: | Rabbit |
| Isotype: | IgG |
| Clonality: | Polyclonal |
| Immunogen: | Synthetic peptide - KLH conjugated |
| Specificity: | This antibody reacts to the N-term of ZEB2. |
| Formulation: | PBS (without Mg ²⁺ , Ca ²⁺), pH 7.4, 150 mM sodium chloride, 0.02% sodium azide, 50% glycerol State: Purified State: Liquid purified Ig fraction |
| Concentration: | lot specific |
| Purification: | Immunoaffinity Chromatography |
| Conjugation: | Unconjugated |
| Storage: | Store the antibody undiluted at 2-8°C for one month or (in aliquots) at -20°C for longer. Avoid repeated freezing and thawing. |
| Stability: | Shelf life: one year from despatch. |
| Gene Name: | zinc finger E-box binding homeobox 2 |
| Database Link: | Entrez Gene 24136 Mouse Entrez Gene 311071 Rat Entrez Gene 9839 Human O60315 |
| Synonyms: | ZFX1B, ZEB2, SMADIP1, SIP1, KIAA0569 |
| Protein Families: | Druggable Genome, Transcription Factors |

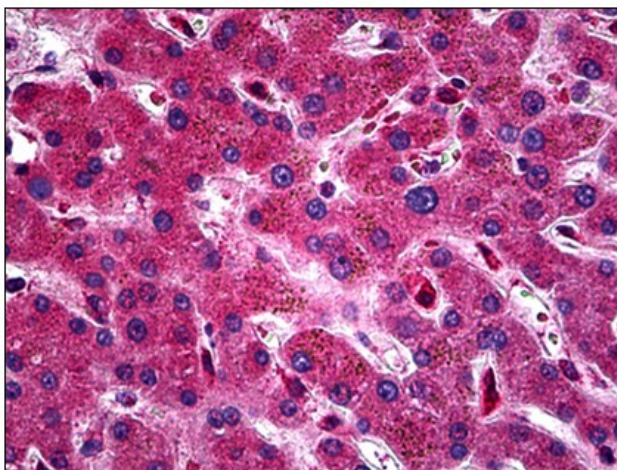


[View online »](#)

Product images:



Western blot analysis of extracts from Jurkat cells, using ZEB2 Antibody. The lane on the right is treated with the synthesized peptide.



Human Liver: Formalin-Fixed, Paraffin-Embedded (FFPE)