

## Product datasheet for **AP31265PU-N**

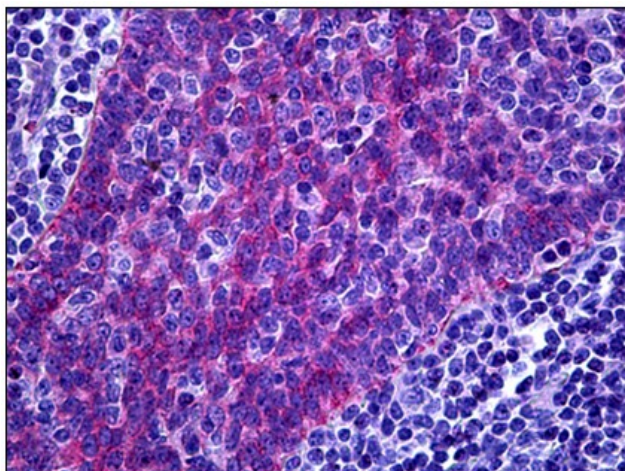
### **FREM1 (C-term) Rabbit Polyclonal Antibody**

#### **Product data:**

Product Type:	Primary Antibodies
Applications:	ELISA, IF, IHC, WB
Recommended Dilution:	<b>ELISA.</b> <b>Immunocytochemistry.</b> <b>Immunohistochemistry on Paraffin Sections:</b> 10 µg/ml. <b>Western Blot:</b> 0.5 - 1 µg/ml.
Reactivity:	Human, Mouse
Host:	Rabbit
Isotype:	IgG
Clonality:	Polyclonal
Immunogen:	Synthetic peptide - KLH conjugated
Specificity:	This antibody reacts to the internal region of FREM1.
Formulation:	PBS containing 0.02% sodium azide as preservative State: Purified State: Liquid purified Ig fraction
Concentration:	lot specific
Purification:	Immunoaffinity chromatography
Conjugation:	Unconjugated
Storage:	Store the antibody undiluted at 2-8°C.
Stability:	Shelf life: one year from despatch.
Gene Name:	FRAS1 related extracellular matrix 1
Database Link:	<a href="#">Entrez Gene 329872 Mouse</a> <a href="#">Entrez Gene 158326 Human Q5H8C1</a>
Synonyms:	C9orf143, C9orf145, C9orf154, Protein QBRICK
Protein Families:	Protease, Transmembrane



[View online »](#)

**Product images:**

Human Tonsil: Formalin-Fixed, Paraffin-Embedded (FFPE)