

## Product datasheet for **AP31264PU-N**

### IFITM1 Rabbit Polyclonal Antibody

#### Product data:

Product Type:	Primary Antibodies
Applications:	ELISA, IF, IHC, WB
Recommended Dilution:	<b>ELISA.</b> <b>Immunocytochemistry/ Immunofluorescence:</b> Start at 10 µg/ml. <b>Immunohistochemistry on Paraffin Sections:</b> 5 µg/ml. <b>Western Blot:</b> 1 - 2 µg/ml.
Reactivity:	Human, Mouse, Rat
Host:	Rabbit
Isotype:	IgG
Clonality:	Polyclonal
Immunogen:	CD225 / IFITM1 antibody was raised against a 16 amino acid synthetic peptide near the center of human IFITM1. The immunogen is located within amino acids 40 - 90 of IFITM1.
Specificity:	This antibody reacts to the internal region of IFITM1.
Formulation:	PBS containing 0.02% sodium azide as preservative State: Purified State: Liquid purified Ig fraction
Concentration:	lot specific
Purification:	Immunoaffinity chromatography
Conjugation:	Unconjugated
Storage:	Store undiluted at 2-8°C for one month or (in aliquots) at -20°C for longer. Avoid repeated freezing and thawing.
Stability:	Shelf life: one year from despatch.
Predicted Protein Size:	14 kDa (Predicted)
Gene Name:	interferon induced transmembrane protein 1
Database Link:	<a href="#">Entrez Gene 68713 Mouse</a> <a href="#">Entrez Gene 293618 Rat</a> <a href="#">Entrez Gene 8519 Human P13164</a>
Synonyms:	Leu-13 antigen, IFI17



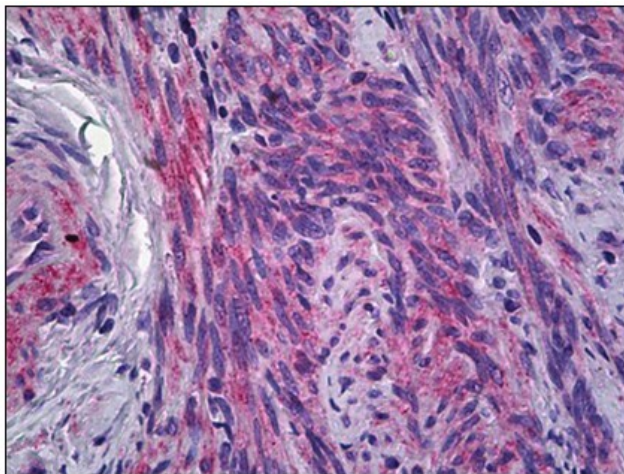
[View online »](#)

**Note:** Antibody validated: Western Blot in mouse samples; Immunocytochemistry in human samples and Immunofluorescence in human samples. All other applications and species not yet tested.

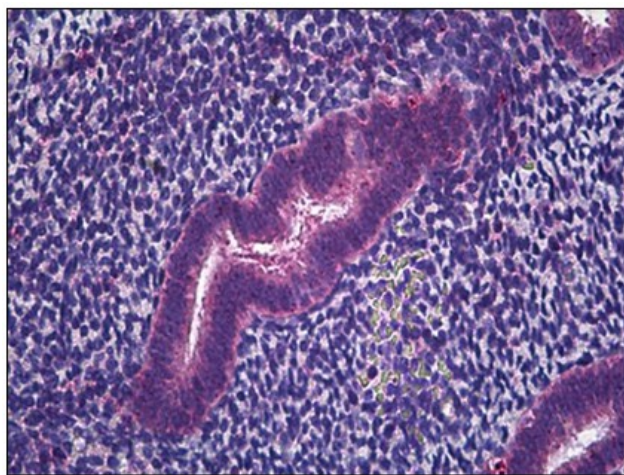
**Protein Families:** Druggable Genome, Transmembrane

**Protein Pathways:** B cell receptor signaling pathway

**Product images:**



Human Uterus, Myometrium: Formalin-Fixed, Paraffin-Embedded (FFPE)



Human Uterus, Endometrium: Formalin-Fixed, Paraffin-Embedded (FFPE)