

## Product datasheet for **AP31263PU-N**

### HNT (NTM) (C-term) Rabbit Polyclonal Antibody

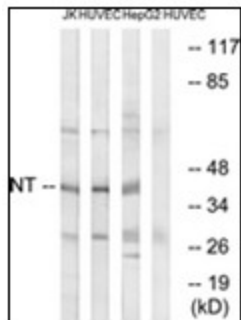
#### Product data:

Product Type:	Primary Antibodies
Applications:	ELISA, IHC, WB
Recommended Dilution:	<b>ELISA:</b> 1/20000. <b>Immunohistochemistry on Paraffin Sections:</b> 1/200. <b>Western Blot:</b> 1/500 - 1/1000.
Reactivity:	Human
Host:	Rabbit
Isotype:	IgG
Clonality:	Polyclonal
Immunogen:	Synthetic peptide - KLH conjugated
Specificity:	NT Antibody detects endogenous levels of total NT protein.
Formulation:	PBS (without Mg <sup>2+</sup> , Ca <sup>2+</sup> ), pH 7.4, 150 mM sodium chloride, 0.02% sodium azide, 50% glycerol State: Purified State: Liquid purified Ig fraction
Concentration:	lot specific
Purification:	Immunoaffinity chromatography
Conjugation:	Unconjugated
Storage:	Store the antibody at -20°C. Avoid repeated freezing and thawing.
Stability:	Shelf life: one year from despatch.
Gene Name:	neurotrimin
Database Link:	<a href="#">Entrez Gene 50863 Human Q9P121</a>
Synonyms:	NTM, NT, UNQ297/PRO337,hNT
Protein Families:	Transmembrane

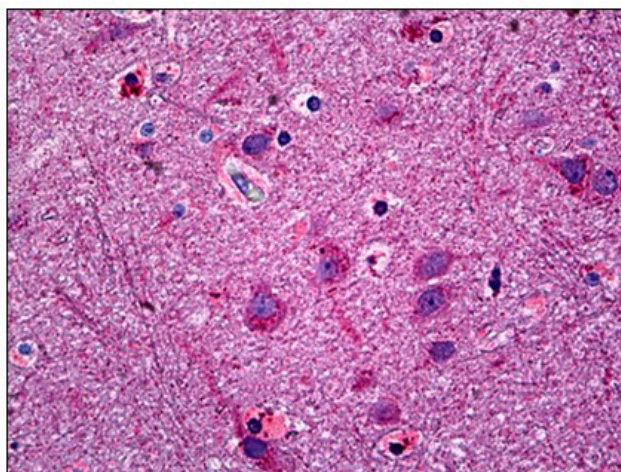


[View online »](#)

**Product images:**



Western blot analysis of extracts from HuvEc/HepG2/Jurkat cells, using NT Antibody. The lane on the right is treated with the synthesized peptide.



Human Brain, Cortex: Formalin-Fixed, Paraffin-Embedded (FFPE)