

Product datasheet for **AP31261PU-N**

COL5A2 (C-term) Rabbit Polyclonal Antibody

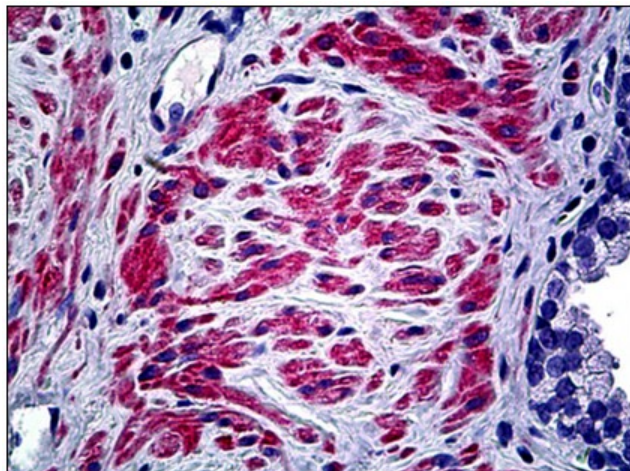
Product data:

| | |
|-----------------------|---|
| Product Type: | Primary Antibodies |
| Applications: | ELISA, IF, IHC |
| Recommended Dilution: | ELISA: 1/40000. Immunofluorescence: 1/100 - 1/500. Immunohistochemistry on Paraffin Sections: 1/100. |
| Reactivity: | Human |
| Host: | Rabbit |
| Isotype: | IgG |
| Clonality: | Polyclonal |
| Immunogen: | Synthetic peptide - KLH conjugated from the N-term (1-50) |
| Specificity: | Collagen V alpha2 Antibody detects endogenous levels of total Collagen V alpha2 protein. |
| Formulation: | PBS (without Mg ²⁺ , Ca ²⁺), pH 7.4, 150 mM sodium chloride, 0.02% sodium azide, 50% glycerol State: Purified State: Liquid purified Ig fraction |
| Concentration: | lot specific |
| Purification: | Immunoaffinity chromatography |
| Conjugation: | Unconjugated |
| Storage: | store the antibody at -20°C. Avoid repeated freezing and thawing. |
| Stability: | Shelf life: one year from despatch. |
| Gene Name: | collagen type V alpha 2 chain |
| Database Link: | Entrez Gene 1290 Human P05997 |
| Synonyms: | COL5A2 |
| Protein Families: | Druggable Genome |
| Protein Pathways: | ECM-receptor interaction, Focal adhesion |

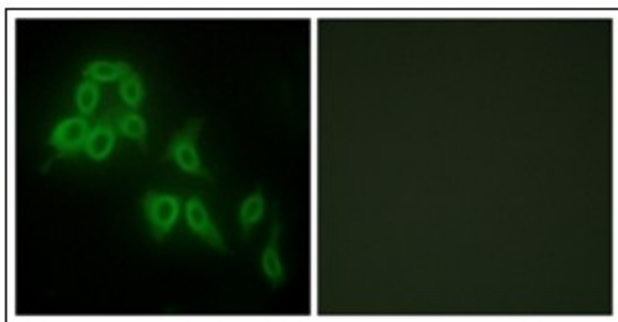


[View online »](#)

Product images:



Human Prostate: Formalin-Fixed, Paraffin-Embedded (FFPE)



Immunofluorescence analysis of HepG2 cells, using Collagen V alpha2 Antibody. The picture on the right is treated with the synthesized peptide.