

Product datasheet for **AP31259PU-N**

Nsf Rabbit Polyclonal Antibody

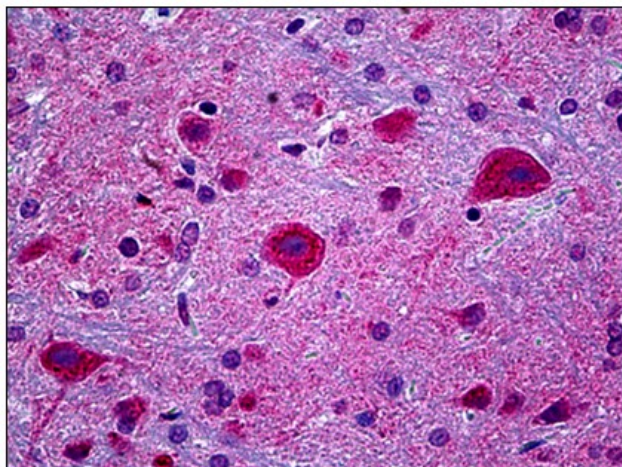
Product data:

Product Type:	Primary Antibodies
Applications:	IHC, IP, WB
Recommended Dilution:	Immunohistochemistry on Paraffin Sections: 5 µg/ml. Immunoprecipitation. Western Blot.
Reactivity:	Mouse, Rat
Host:	Rabbit
Isotype:	IgG
Clonality:	Polyclonal
Immunogen:	Synthetic peptide corresponding to amino acids around 731 of rat NSF.
Specificity:	The antibody recognizes 85 kD NSF.
Formulation:	PBS, 50% glycerol containing 1% BSA as stabilizer and 0.02% sodium azide as preservative State: Purified State: Liquid purified Ig fraction
Concentration:	lot specific
Purification:	Affinity chromatography on Protein A
Conjugation:	Unconjugated
Storage:	store the antibody at -20°C. Avoid repeated freezing and thawing.
Stability:	Shelf life: one year from despatch.
Gene Name:	N-ethylmaleimide-sensitive factor
Database Link:	Entrez Gene 18195 Mouse Entrez Gene 60355 Rat Q9QUL6
Synonyms:	SKD2



[View online »](#)

Product images:



Rat Brain: Formalin-Fixed, Paraffin-Embedded (FFPE)