

## Product datasheet for **AP31256PU-N**

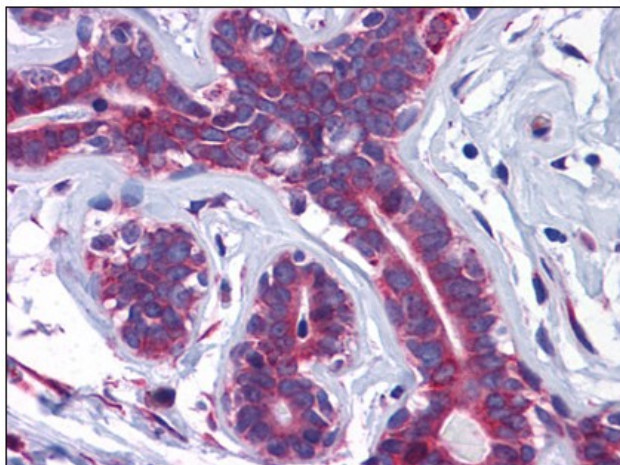
### SLC39A7 (N-term) Rabbit Polyclonal Antibody

#### Product data:

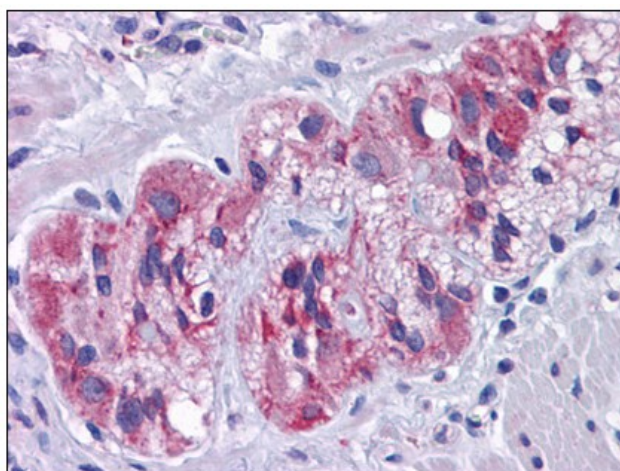
Product Type:	Primary Antibodies
Applications:	ELISA, IHC, WB
Recommended Dilution:	<b>ELISA.</b> <b>Immunohistochemistry on Paraffin Sections:</b> 5 µg/ml. <b>Western Blot:</b> 0.5 - 1 µg/ml.
Reactivity:	Human, Mouse, Rat
Host:	Rabbit
Clonality:	Polyclonal
Immunogen:	Synthetic peptide - KLH conjugated
Specificity:	This antibody reacts to the N-term of SLC39A7.
Formulation:	PBS containing 0.02% sodium azide as preservative State: Purified State: Liquid purified Ig fraction
Concentration:	lot specific
Purification:	Immunoaffinity chromatography
Conjugation:	Unconjugated
Storage:	Store the antibody undiluted at 2-8°C.
Stability:	Shelf life: one year from despatch.
Gene Name:	solute carrier family 39 member 7
Database Link:	<a href="#">Entrez Gene 14977 Mouse</a> <a href="#">Entrez Gene 294281 Rat</a> <a href="#">Entrez Gene 7922 Human Q92504</a>
Synonyms:	Zinc transporter SLC39A7, HKE4, RING5
Protein Families:	Transmembrane



[View online »](#)

**Product images:**

Human Breast: Formalin-Fixed, Paraffin-Embedded (FFPE)



Human Colon, Myenteric Plexus: Formalin-Fixed, Paraffin-Embedded (FFPE)