

Product datasheet for **AP31252PU-N**

LMBRD1 (C-term) Rabbit Polyclonal Antibody

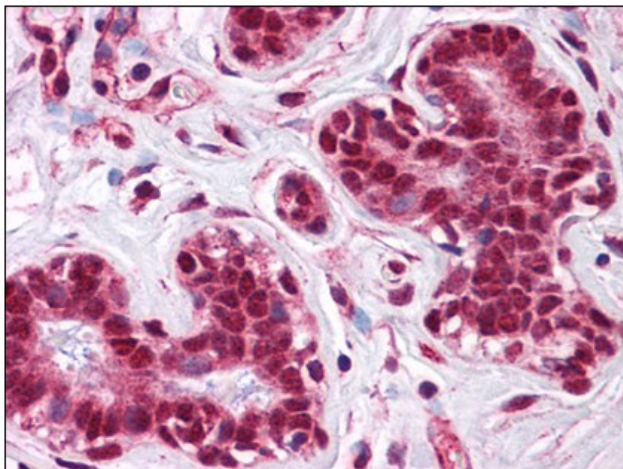
Product data:

Product Type:	Primary Antibodies
Applications:	ELISA, IHC, WB
Recommended Dilution:	ELISA. Immunohistochemistry on Paraffin Sections: 5 µg/ml. Western Blot: 1 - 2 µg/ml.
Reactivity:	Human, Mouse, Rat
Host:	Rabbit
Clonality:	Polyclonal
Immunogen:	Synthetic peptide - KLH conjugated
Specificity:	This antibody reacts to the C-term of LMBRD1.
Formulation:	PBS containing 0.02% sodium azide as preservative State: Purified State: Liquid purified Ig fraction
Concentration:	lot specific
Purification:	Immunoaffinity chromatography
Conjugation:	Unconjugated
Storage:	Store the antibody undiluted at 2-8°C.
Stability:	Shelf life: one year from despatch.
Gene Name:	LMBR1 domain containing 1
Database Link:	Entrez Gene 68421 Mouse Entrez Gene 246046 Rat Entrez Gene 55788 Human Q9NUN5
Synonyms:	C6orf209, NESI
Protein Families:	Transmembrane

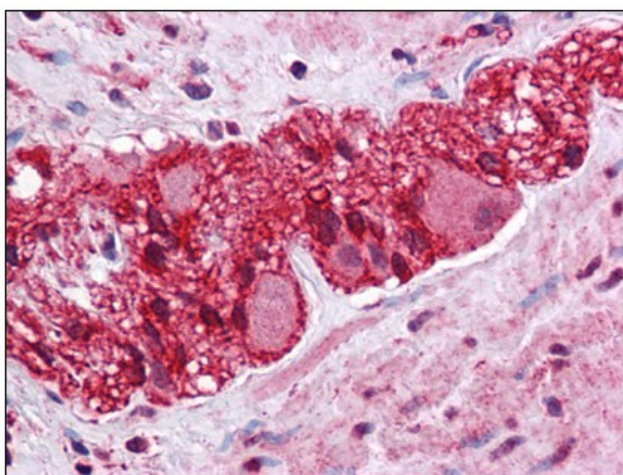


[View online »](#)

Product images:



Human Breast: Formalin-Fixed, Paraffin-Embedded (FFPE)



Human Colon, Myenteric Plexus: Formalin-Fixed, Paraffin-Embedded (FFPE)