

Product datasheet for **AP31242PU-N**

KPNA4 (N-term) Rabbit Polyclonal Antibody

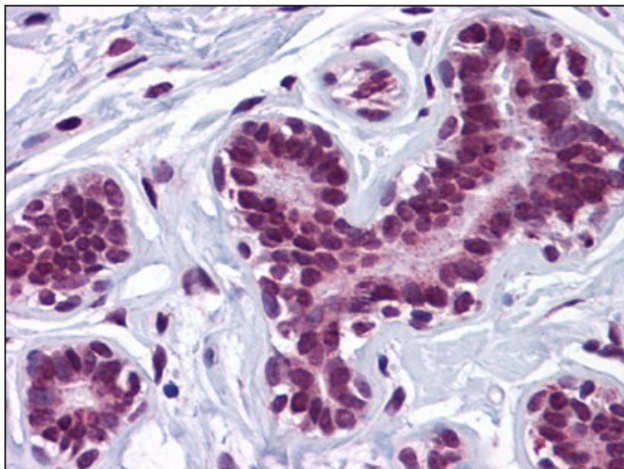
Product data:

Product Type:	Primary Antibodies
Applications:	ELISA, IHC, WB
Recommended Dilution:	ELISA. Immunohistochemistry on Paraffin Sections: 5 µg/ml. Western Blot: 1 - 2 µg/ml.
Reactivity:	Human, Mouse, Rat
Host:	Rabbit
Clonality:	Polyclonal
Immunogen:	Synthetic peptide - KLH conjugated
Specificity:	This antibody reacts to the N-term of KPNA4.
Formulation:	PBS containing 0.02% sodium azide as preservative State: Purified State: Liquid purified Ig fraction
Concentration:	lot specific
Purification:	Immunoaffinity chromatography
Conjugation:	Unconjugated
Storage:	Store the antibody undiluted at 2-8°C.
Stability:	Shelf life: one year from despatch.
Gene Name:	karyopherin subunit alpha 4
Database Link:	Entrez Gene 16649 Mouse Entrez Gene 361959 Rat Entrez Gene 3840 Human O00629
Synonyms:	QIP1, Karyopherin subunit alpha-4, Importin alpha Q1

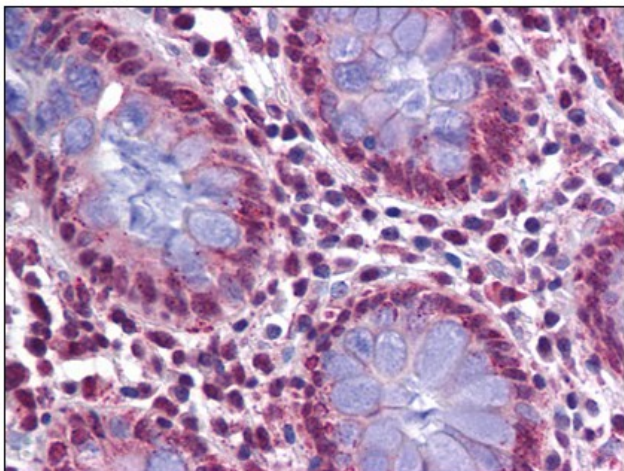


[View online »](#)

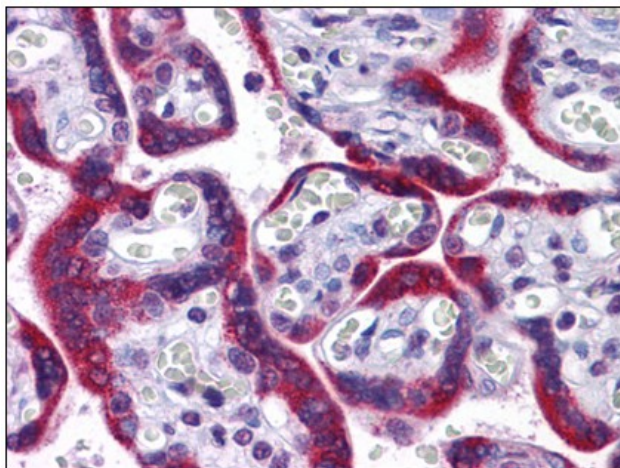
Product images:



Human Breast: Formalin-Fixed, Paraffin-Embedded (FFPE)



Human Colon: Formalin-Fixed, Paraffin-Embedded (FFPE)



Human Placenta: Formalin-Fixed, Paraffin-Embedded (FFPE)