

## Product datasheet for **AP31238PU-N**

### **NLRP14 (N-term) Rabbit Polyclonal Antibody**

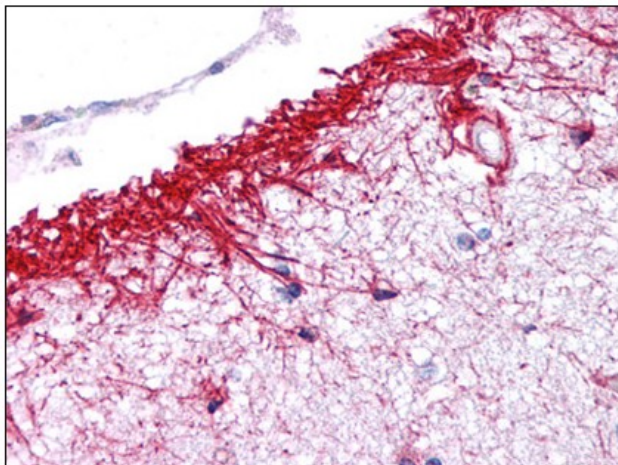
#### **Product data:**

Product Type:	Primary Antibodies
Applications:	ELISA, IHC, WB
Recommended Dilution:	<b>ELISA.</b> <b>Immunohistochemistry on Paraffin Sections:</b> 5 µg/ml. <b>Western Blot:</b> 1 - 2 µg/ml.
Reactivity:	Human, Mouse, Rat
Host:	Rabbit
Isotype:	IgG
Clonality:	Polyclonal
Immunogen:	Synthetic peptide - KLH conjugated
Specificity:	This antibody reacts to the N-term of NLRP14.
Formulation:	PBS containing 0.02% sodium azide as preservative State: Purified State: Liquid purified Ig fraction
Concentration:	lot specific
Purification:	Immunoaffinity chromatography
Conjugation:	Unconjugated
Storage:	Store the antibody undiluted at 2-8°C.
Stability:	Shelf life: one year from despatch.
Gene Name:	NLR family, pyrin domain containing 14
Database Link:	<u><a href="#">Entrez Gene 76858 Mouse</a></u> <u><a href="#">Entrez Gene 499234 Rat</a></u> <u><a href="#">Entrez Gene 338323 Human Q86W24</a></u>
Synonyms:	NALP14, NOD5

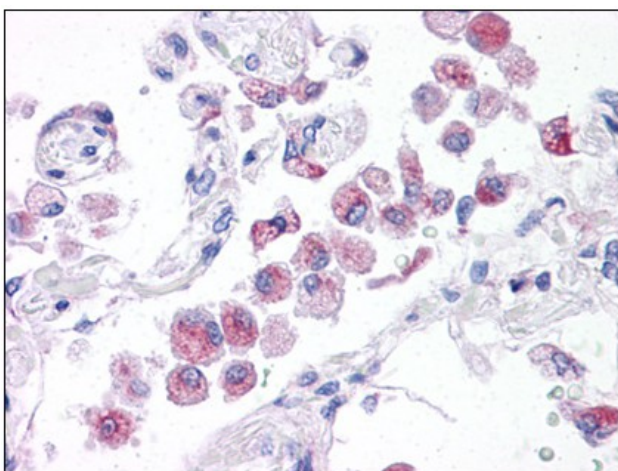


[View online »](#)

**Product images:**



Human Brain, Cortex: Formalin-Fixed, Paraffin-Embedded (FFPE)



Human Lung: Formalin-Fixed, Paraffin-Embedded (FFPE)