

Product datasheet for **AP31232PU-N**

CARD4 (NOD1) (C-term) Rabbit Polyclonal Antibody

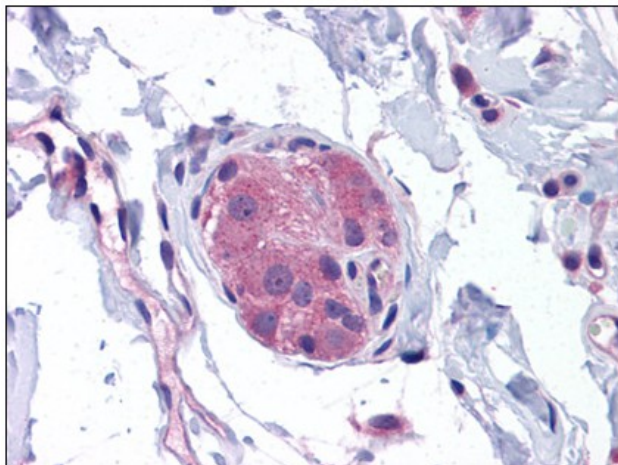
Product data:

Product Type:	Primary Antibodies
Applications:	ELISA, IHC, WB
Recommended Dilution:	ELISA. Immunohistochemistry on Paraffin Sections: 5 µg/ml. Western Blot: 1 - 2 µg/ml.
Reactivity:	Human, Mouse, Rat
Host:	Rabbit
Clonality:	Polyclonal
Immunogen:	Synthetic peptide - KLH conjugated
Specificity:	This antibody reacts to the C-term of NOD1.
Formulation:	PBS containing 0.02% sodium azide as preservative State: Purified State: Liquid purified Ig fraction
Concentration:	lot specific
Purification:	Immunoaffinity chromatography
Conjugation:	Unconjugated
Storage:	Store the antibody undiluted at 2-8°C.
Stability:	Shelf life: one year from despatch.
Gene Name:	nucleotide binding oligomerization domain containing 1
Database Link:	Entrez Gene 107607 Mouse Entrez Gene 500133 Rat Entrez Gene 10392 Human Q9Y239
Synonyms:	CARD4; CLR7.1; NLRC1
Protein Families:	Druggable Genome
Protein Pathways:	Epithelial cell signaling in Helicobacter pylori infection, NOD-like receptor signaling pathway



[View online »](#)

Product images:



Human Small Intestine, Submucosal Plexus:
Formalin-Fixed, Paraffin-Embedded (FFPE)