

Product datasheet for **AP31230PU-N**

Parathyroid Hormone Receptor 1 (PTH1R) Rabbit Polyclonal Antibody

Product data:

Product Type:	Primary Antibodies
Applications:	ELISA, IF, IHC, WB
Recommended Dilution:	ELISA: 1/10000. Immunofluorescence: 1/100 - 1/500. Immunohistochemistry on Paraffin Sections: 1/200. Western Blot: 1/500 - 1/1000.
Reactivity:	Human, Mouse, Rat
Host:	Rabbit
Isotype:	IgG
Clonality:	Polyclonal
Immunogen:	Synthetic peptide from human PTHR1 (aa145-194).
Specificity:	This antibody reacts to the internal region of PTH1R / PTHR1.
Formulation:	PBS (without Mg ²⁺ , Ca ²⁺), pH 7.4, 150 mM sodium chloride, 0.02% sodium azide, 50% glycerol State: Purified State: Liquid purified Ig fraction
Concentration:	lot specific
Purification:	Immunoaffinity chromatography
Conjugation:	Unconjugated
Storage:	Store the antibody undiluted at 2-8°C for one month or (in aliquots) at -20°C for longer. Avoid repeated freezing and thawing.
Stability:	Shelf life: one year from despatch.
Gene Name:	parathyroid hormone 1 receptor
Database Link:	Entrez Gene 19228 Mouse Entrez Gene 56813 Rat Entrez Gene 5745 Human Q03431



[View online »](#)

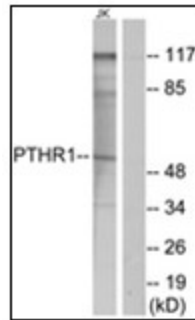
Background: PTHR1, a Parathyroid Hormone Receptor, mediates PTH-dependent regulation of mineral-ion homeostasis. It also mediates the paracrine action of PTHrP in endochondral bone formation. Mutations in this receptor are responsible for disorders of calcium and bone metabolism such as chondrodysplasia, hypercalcemia, and chronic renal failure. Three promoters, P1, P2, and P3, regulate the expression of PTHR.

Synonyms: Parathyroid hormone 1 receptor, PTH/PTHrP type I receptor, PTH1R, PTHR, PTHR1

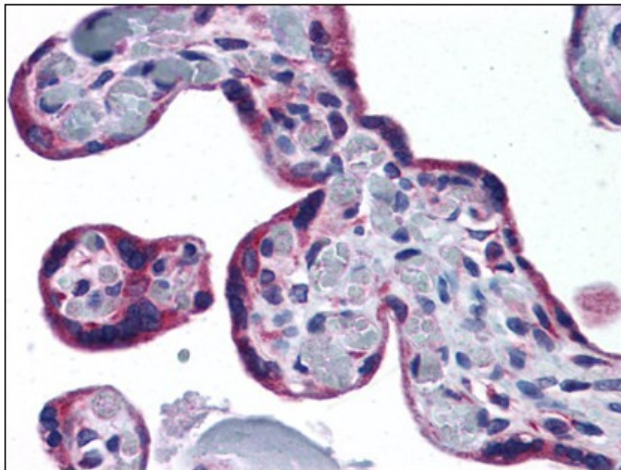
Protein Families: Druggable Genome, GPCR, Transmembrane

Protein Pathways: Neuroactive ligand-receptor interaction

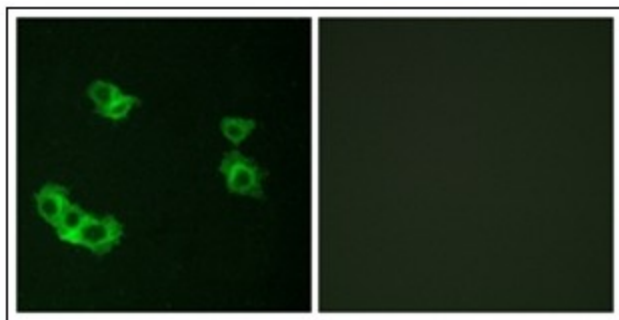
Product images:



Western blot analysis of extracts from Jurkat cells, using PTHR1 Antibody. The lane on the right is treated with the synthesized peptide.



Human Placenta: Formalin-Fixed, Paraffin-Embedded (FFPE)



Immunofluorescence analysis of MCF7 cells, using PTHR1 Antibody. The picture on the right is treated with the synthesized peptide.