

Product datasheet for **AP31226PU-N**

CRISP2 (N-term) Rabbit Polyclonal Antibody

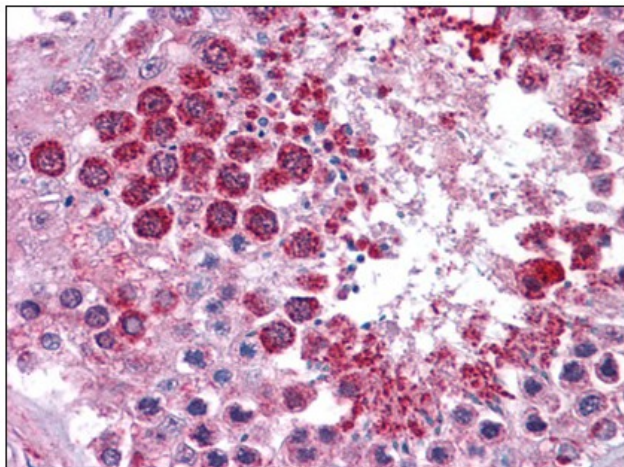
Product data:

Product Type:	Primary Antibodies
Applications:	ELISA, IHC, WB
Recommended Dilution:	ELISA. Immunohistochemistry on Paraffin Sections: 5 µg/ml. Western Blot: 0.5 - 1 µg/ml.
Reactivity:	Human
Host:	Rabbit
Clonality:	Polyclonal
Immunogen:	Synthetic peptide - KLH conjugated
Specificity:	This antibody reacts to the N-term of CRISP2.
Formulation:	PBS, 0.02% sodium azide State: Purified State: Liquid purified Ig fraction
Concentration:	lot specific
Purification:	Immunoaffinity chromatography
Conjugation:	Unconjugated
Storage:	Store the antibody undiluted at 2-8°C.
Stability:	Shelf life: one year from despatch.
Gene Name:	cysteine rich secretory protein 2
Database Link:	Entrez Gene 7180 Human P16562
Synonyms:	Cysteine-rich secretory protein 2, CRISP-2, Testis-specific protein TPX-1, Cancer/testis antigen 36, GAPDL5, TPX1, CT36
Protein Families:	Secreted Protein



[View online »](#)

Product images:



Human Testis: Formalin-Fixed, Paraffin-Embedded (FFPE)