

Product datasheet for **AP31225PU-N**

VGF (C-term) Rabbit Polyclonal Antibody

Product data:

Product Type:	Primary Antibodies
Applications:	ELISA, IHC, WB
Recommended Dilution:	ELISA: 1/40000. Immunohistochemistry on Paraffin Sections: 1/200. Western Blot: 1/500 - 1/1000.
Reactivity:	Human, Mouse, Rat
Host:	Rabbit
Isotype:	IgG
Clonality:	Polyclonal
Immunogen:	Synthetic peptide - KLH conjugated
Specificity:	This antibody reacts to the C-term of VGF.
Formulation:	PBS (without Mg ²⁺ , Ca ²⁺), pH 7.4, 150 mM sodium chloride, 0.02% sodium azide, 50% glycerol State: Purified State: Liquid purified Ig fraction
Concentration:	lot specific
Purification:	Immunoaffinity chromatography
Conjugation:	Unconjugated
Storage:	Store the antibody undiluted at 2-8°C for one month or (in aliquots) at -20°C for longer. Avoid repeated freezing and thawing.
Stability:	Shelf life: one year from despatch.
Gene Name:	VGF nerve growth factor inducible
Database Link:	<u>Entrez Gene 29461 Rat</u> <u>Entrez Gene 381677 Mouse</u> <u>Entrez Gene 7425 Human</u> <u>O15240</u>



[View online »](#)

Background:

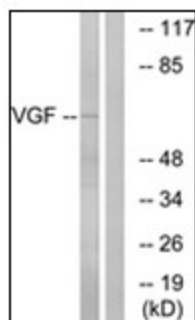
VGF encodes a 70-kD polypeptide that shares similarities with the secretogranin/chromogranin family and is found in the secretory granules of subsets of neurons and endocrine cells. Expression of VGF is both developmentally regulated and is regulated in different brain regions in response to different stimuli. VGF has been shown to play a role in energy homeostasis. Expression of VGF in the hypothalamus of rats and mice is induced by exercise and in response to fasting.

Synonyms:

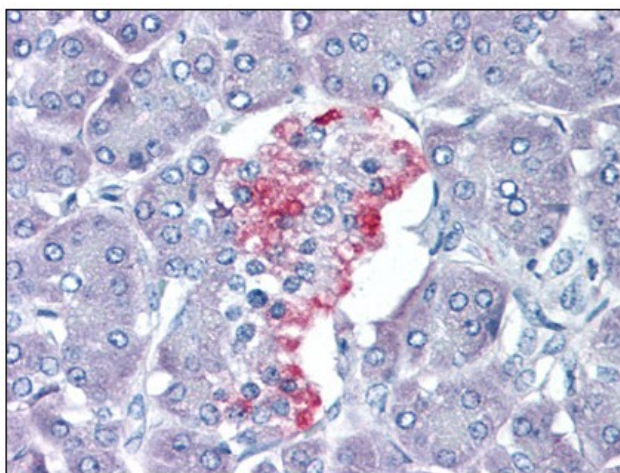
Neurosecretory protein VGF

Protein Families:

Secreted Protein

Product images:


Western blot analysis of extracts from RAW264.7 cells, using VGF Antibody. The lane on the right is treated with the synthesized peptide.



Human Pancreas: Formalin-Fixed, Paraffin-Embedded (FFPE)