

Product datasheet for **AP31223PU-N**

c-Myb (MYB) (N-term) Rabbit Polyclonal Antibody

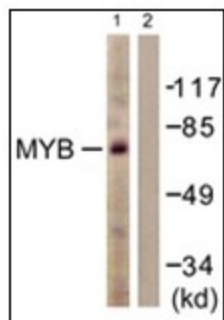
Product data:

Product Type:	Primary Antibodies
Applications:	ELISA, IF, IHC, WB
Recommended Dilution:	ELISA: 1/10000. Immunofluorescence: 1/100 - 1/500. Immunohistochemistry on Paraffin Sections: 1/200. Western Blot: 1/500 - 1/1000.
Reactivity:	Human, Mouse
Host:	Rabbit
Isotype:	IgG
Clonality:	Polyclonal
Immunogen:	Synthetic peptide from human MYB (aa1-50). Epitope: aa1-50
Specificity:	This antibody reacts to the N-term of MYB / c-Myb.
Formulation:	PBS (without Mg ²⁺ , Ca ²⁺), pH 7.4, 150 mM sodium chloride, 0.02% sodium azide, 50% glycerol State: Purified State: Liquid purified Ig fraction
Concentration:	lot specific
Purification:	Immunoaffinity chromatography
Conjugation:	Unconjugated
Storage:	Store the antibody undiluted at 2-8°C for one month or (in aliquots) at -20°C for longer. Avoid repeated freezing and thawing.
Stability:	Shelf life: one year from despatch.
Gene Name:	MYB proto-oncogene, transcription factor
Database Link:	Entrez Gene 17863 Mouse Entrez Gene 4602 Human P10242
Synonyms:	c-Myb
Protein Families:	Druggable Genome, ES Cell Differentiation/IPS, Stem cell - Pluripotency, Transcription Factors

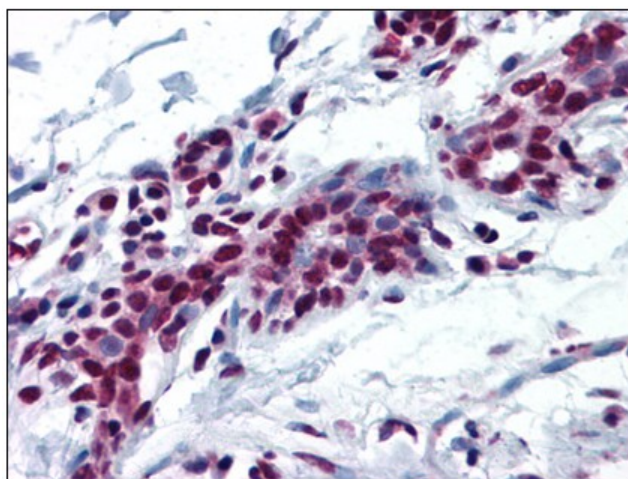


[View online »](#)

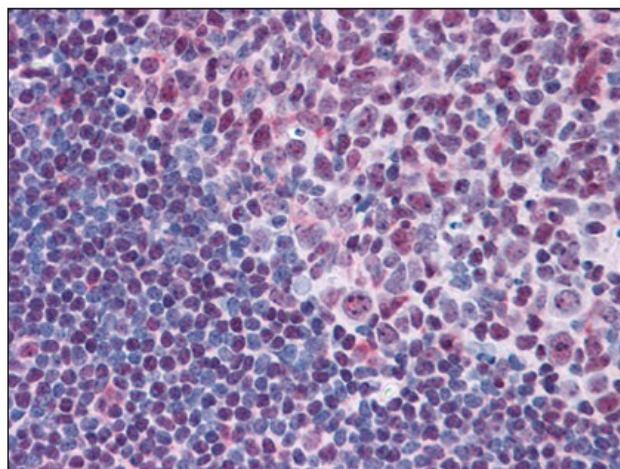
Product images:



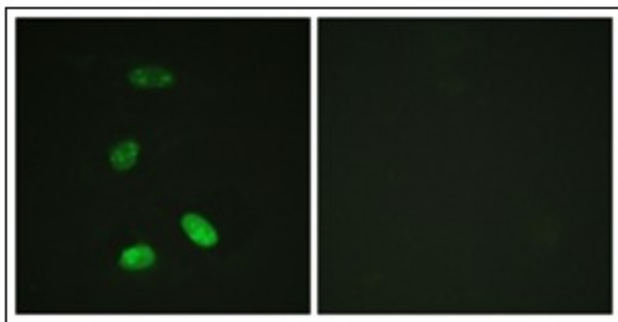
Western blot analysis of extracts from HUVEC cells, using MYB antibody. The lane on the right is treated with the synthesized peptide.



Human Breast: Formalin-Fixed, Paraffin-Embedded (FFPE)



Human Tonsil: Formalin-Fixed, Paraffin-Embedded (FFPE)



Immunofluorescence analysis of HeLa cells, using MYB antibody. The picture on the right is treated with the synthesized peptide.