

## Product datasheet for **AP31219PU-N**

### Calcium binding protein 7 (CABP7) (N-term) Rabbit Polyclonal Antibody

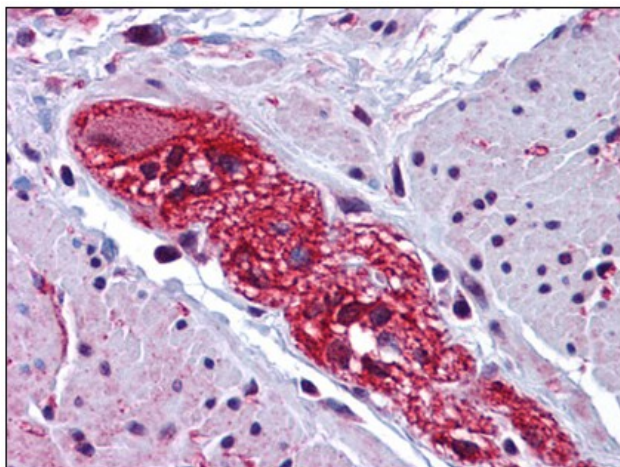
#### Product data:

Product Type:	Primary Antibodies
Applications:	ELISA, IF, IHC, WB
Recommended Dilution:	<b>ELISA.</b> <b>Immunocytochemistry.</b> <b>Immunohistochemistry on Paraffin Sections:</b> 2.5 µg/ml. <b>Western Blot:</b> 1 - 2 µg/ml.
Reactivity:	Human, Mouse, Rat
Host:	Rabbit
Isotype:	IgG
Clonality:	Polyclonal
Immunogen:	Synthetic peptide - KLH conjugated
Specificity:	This antibody reacts to the N-term of CABP7.
Formulation:	PBS containing 0.02% sodium azide as preservative State: Purified State: Liquid purified Ig fraction
Concentration:	lot specific
Purification:	Immunoaffinity chromatography
Conjugation:	Unconjugated
Storage:	Store the antibody undiluted at 2-8°C.
Stability:	Shelf life: one year from despatch.
Gene Name:	calcium binding protein 7
Database Link:	<a href="#">Entrez Gene 192650 Mouse</a> <a href="#">Entrez Gene 360970 Rat</a> <a href="#">Entrez Gene 164633 Human Q86V35</a>
Synonyms:	Calcium-binding protein 7
Protein Families:	Transmembrane



[View online »](#)

**Product images:**



Human Colon, Submucosal Plexus: Formalin-Fixed, Paraffin-Embedded (FFPE)