

## Product datasheet for **AP31218PU-N**

### ATP11A (N-term) Rabbit Polyclonal Antibody

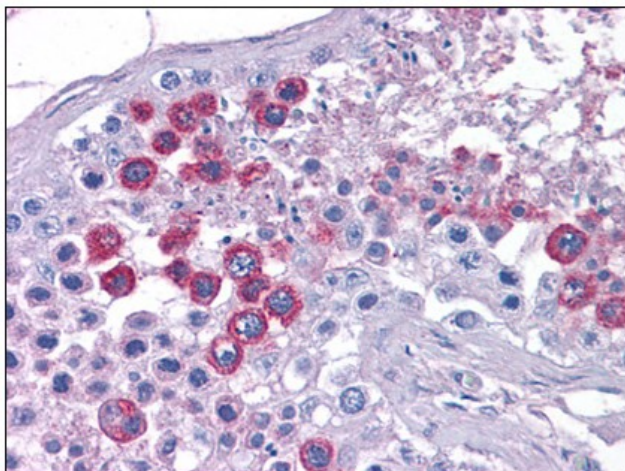
#### Product data:

Product Type:	Primary Antibodies
Applications:	ELISA, IF, IHC, WB
Recommended Dilution:	<b>ELISA.</b> <b>Immunocytochemistry.</b> <b>Immunohistochemistry on Paraffin Sections:</b> 5 µg/ml. <b>Western Blot:</b> 1 - 2 µg/ml.
Reactivity:	Human, Mouse, Rat
Host:	Rabbit
Isotype:	IgG
Clonality:	Polyclonal
Immunogen:	Synthetic peptide - KLH conjugated
Specificity:	This antibody reacts to the N-term of ATP11A.
Formulation:	PBS containing 0.02% sodium azide as preservative State: Purified State: Liquid purified Ig fraction
Concentration:	lot specific
Purification:	Immunoaffinity chromatography
Conjugation:	Unconjugated
Storage:	Store the antibody undiluted at 2-8°C.
Stability:	Shelf life: one year from despatch.
Gene Name:	ATPase phospholipid transporting 11A
Database Link:	<a href="#">Entrez Gene 50770 Mouse</a> <a href="#">Entrez Gene 306600 Rat</a> <a href="#">Entrez Gene 23250 Human P98196</a>
Synonyms:	ATPIH, ATPIS, KIAA1021
Protein Families:	Transmembrane



[View online »](#)

Product images:



Human Testis: Formalin-Fixed, Paraffin-Embedded (FFPE)