

## Product datasheet for **AP31213PU-N**

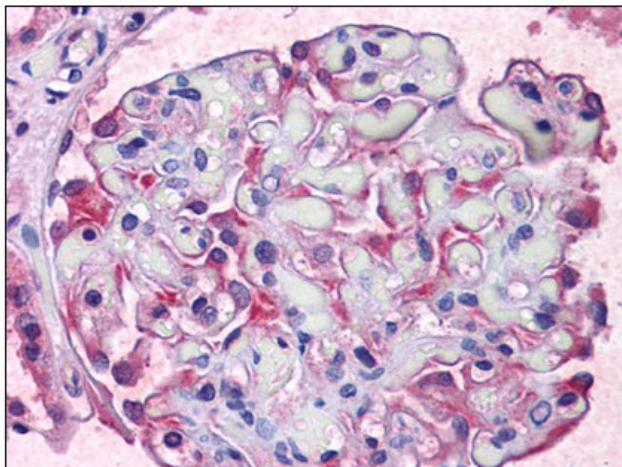
### TCTN2 (C-term) Rabbit Polyclonal Antibody

#### Product data:

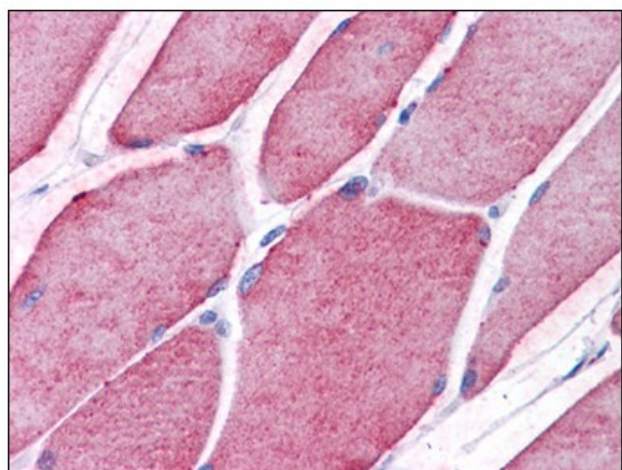
Product Type:	Primary Antibodies
Applications:	ELISA, IHC, WB
Recommended Dilution:	<b>ELISA.</b> <b>Immunohistochemistry on Paraffin Sections:</b> 5 µg/ml. <b>Western Blot:</b> 1 - 2 µg/ml.
Reactivity:	Human, Mouse
Host:	Rabbit
Isotype:	IgG
Clonality:	Polyclonal
Immunogen:	15 amino acid peptide near the carboxy terminus of human TCTN2
Specificity:	This antibody reacts to the C-term of TCTN2.
Formulation:	PBS containing 0.02% sodium azide as preservative State: Aff - Purified State: Liquid purified Ig fraction
Concentration:	lot specific
Purification:	Immunoaffinity chromatography
Conjugation:	Unconjugated
Storage:	Store undiluted at 2-8°C for one month or (in aliquots) at -20°C for longer. Avoid repeated freezing and thawing.
Stability:	Shelf life: one year from despatch.
Gene Name:	tectonic family member 2
Database Link:	<a href="#">Entrez Gene 67978 Mouse</a> <a href="#">Entrez Gene 79867 Human</a> <a href="#">Q96GX1</a>
Background:	Component of the tectonic-like complex, a complex localized at the transition zone of primary cilia and acting as a barrier that prevents diffusion of transmembrane proteins between the cilia and plasma membranes. Required for hedgehog signaling transduction.
Synonyms:	TCTN2, TECT2, C12orf38



[View online »](#)

**Product images:**

Human Kidney: Formalin-Fixed, Paraffin-Embedded (FFPE)



Human Skeletal Muscle: Formalin-Fixed, Paraffin-Embedded (FFPE)