

## Product datasheet for **AP31211PU-N**

### SHIP (INPP5D) (C-term) Rabbit Polyclonal Antibody

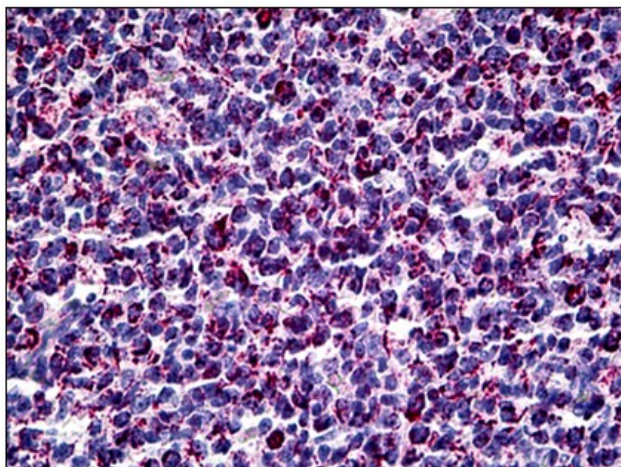
#### Product data:

Product Type:	Primary Antibodies
Applications:	IHC
Recommended Dilution:	<b>Immunohistochemistry on Paraffin Sections:</b> 1/50.
Reactivity:	Human, Mouse, Rat
Host:	Rabbit
Isotype:	IgG
Clonality:	Polyclonal
Immunogen:	Synthetic peptide corresponding to C-terminal of human SHIP-1
Specificity:	This antibody reacts to the C-term of INPP5D / SHIP.
Formulation:	10 mM PBS, pH 7.4 containing BSA as stabilizer and sodium azide as preservative State: Purified State: Liquid purified Ig fraction
Purification:	Immunoaffinity chromatography
Conjugation:	Unconjugated
Storage:	Store the antibody undiluted at 2-8°C. <b>DO NOT FREEZE!</b>
Stability:	Shelf life: one year from despatch.
Gene Name:	inositol polyphosphate-5-phosphatase D
Database Link:	<a href="#">Entrez Gene 16331 Mouse</a> <a href="#">Entrez Gene 54259 Rat</a> <a href="#">Entrez Gene 3635 Human Q92835</a>
Synonyms:	SHIP, SHIP1, SHIP-1, p150Ship, SIP-145
Protein Families:	Druggable Genome
Protein Pathways:	B cell receptor signaling pathway, Fc epsilon RI signaling pathway, Fc gamma R-mediated phagocytosis, Insulin signaling pathway, Phosphatidylinositol signaling system



[View online »](#)

**Product images:**



Human Tonsil: Formalin-Fixed, Paraffin-Embedded (FFPE)