

Product datasheet for **AP31210PU-N**

Oligodendrocyte Specific Protein (CLDN11) (C-term) Rabbit Polyclonal Antibody

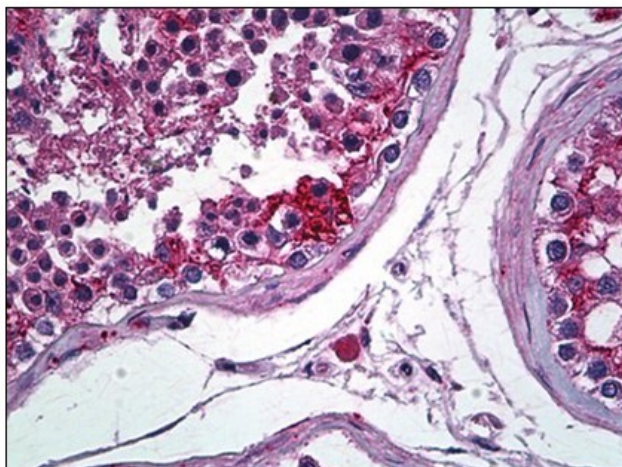
Product data:

Product Type:	Primary Antibodies
Applications:	IHC
Recommended Dilution:	Immunohistochemistry on Paraffin Sections: 1/50.
Reactivity:	Human, Mouse
Host:	Rabbit
Isotype:	IgG
Clonality:	Polyclonal
Immunogen:	Synthetic peptide from C-terminal of human claudin 11 protein
Specificity:	This antibody reacts to the C-term of CLDN11 / Claudin 11.
Formulation:	10 mM PBS, pH 7.4 containing BSA as stabilizer and sodium azide as preservative State: Purified State: Liquid purified Ig fraction
Purification:	Immunoaffinity chromatography
Conjugation:	Unconjugated
Storage:	Store the antibody undiluted at 2-8°C. DO NOT FREEZE!
Stability:	Shelf life: one year from despatch.
Gene Name:	claudin 11
Database Link:	Entrez Gene 18417 Mouse Entrez Gene 5010 Human O75508
Synonyms:	OSP, OTM
Protein Families:	Transmembrane
Protein Pathways:	Cell adhesion molecules (CAMs), Leukocyte transendothelial migration, Tight junction



[View online »](#)

Product images:



Human Testis, Sertoli Cells: Formalin-Fixed, Paraffin-Embedded (FFPE)