

Product datasheet for **AP31202PU-N**

Smad Interacting Protein 1 (ZEB2) (C-term) Rabbit Polyclonal Antibody

Product data:

Product Type:	Primary Antibodies
Applications:	ELISA, IF, IHC, WB
Recommended Dilution:	ELISA. Immunocytochemistry. Immunohistochemistry on Paraffin Sections: 5 µg/ml. Western Blot: 1 - 2 µg/ml.
Reactivity:	Human, Mouse, Rat
Host:	Rabbit
Isotype:	IgG
Clonality:	Polyclonal
Immunogen:	ZEB2 antibody was raised against an 18 amino acid synthetic near the carboxy terminus of Human ZEB2.
Specificity:	This antibody reacts to the C-term of ZEB2.
Formulation:	PBS containing 0.02% Sodium Azide as preservative State: Purified State: Liquid purified Ig fraction
Concentration:	lot specific
Purification:	Immunoaffinity Chromatography
Conjugation:	Unconjugated
Storage:	Store the antibody undiluted at 2-8°C for one month or (in aliquots) at -20°C for longer. Avoid repeated freezing and thawing.
Stability:	Shelf life: one year from despatch.
Gene Name:	zinc finger E-box binding homeobox 2
Database Link:	Entrez Gene 24136 Mouse Entrez Gene 311071 Rat Entrez Gene 9839 Human O60315



[View online »](#)

Background:

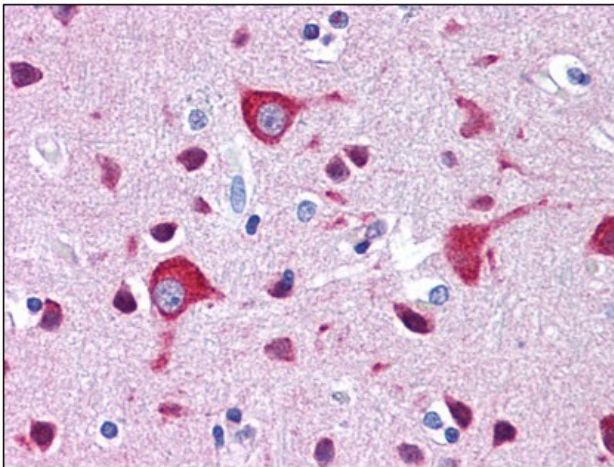
ZEB2, initially identified as Smad interacting-protein 1, is normally located in the nucleus and functions as a DNA-binding transcriptional repressor that interacts with activated SMADs. Like the homologous ZEB1, ZEB2 inhibits the transcription of the E-cadherin gene and induces epithelial-mesenchymal transition, a genetic program controlling cell migration during embryonic development and wound healing, in vitro. ZEB2 can also protect cells from DNA damage-induced apoptosis, suggesting that its expression may contribute to tumor progression. Recent evidence has shown that ZEB2 is often observed in the cytoplasm in numerous cancer tissues, indicating that its localization may be regulated in normal and tumor tissues. Mutations in this gene are also associated with Hirschsprung disease/Mowat-Wilson syndrome.

Synonyms:

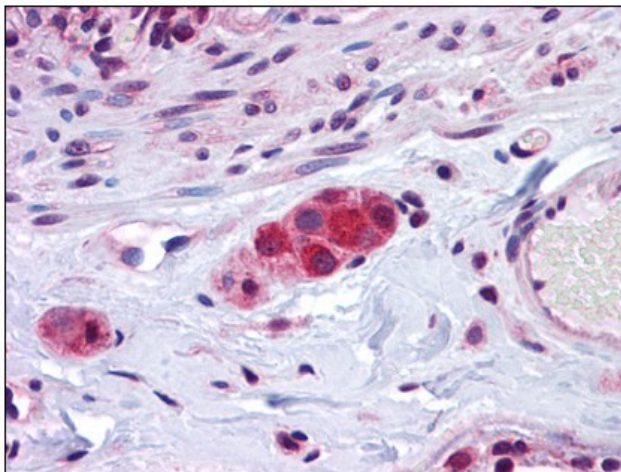
ZFX1B, ZEB2, SMADIP1, SIP1, KIAA0569

Protein Families:

Druggable Genome, Transcription Factors

Product images:

Human Brain, Cortex: Formalin-Fixed, Paraffin-Embedded (FFPE)



Human Small Intestine, Submucosal Plexus: Formalin-Fixed, Paraffin-Embedded (FFPE)