

Product datasheet for **AP31200PU-N**

MMP23 (MMP23B) (C-term) Rabbit Polyclonal Antibody

Product data:

| | |
|-----------------------|---|
| Product Type: | Primary Antibodies |
| Applications: | IHC, WB |
| Recommended Dilution: | Immunohistochemistry on Paraffin Sections: 1/50. Western Blot. |
| Reactivity: | Human |
| Host: | Rabbit |
| Isotype: | IgG |
| Clonality: | Polyclonal |
| Immunogen: | MMP23B antibody was raised against a synthetic peptide derived from C-terminus of human MMP-23 protein |
| Specificity: | This antibody reacts to the C-term of MMP23B. |
| Formulation: | 10 mM PBS, pH 7.4 containing BSA as stabilizer and sodium azide as preservative State: Aff - Purified State: Liquid purified Ig fraction |
| Purification: | Immunoaffinity chromatography |
| Conjugation: | Unconjugated |
| Storage: | Store the antibody undiluted at 2-8°C. DO NOT FREEZE! |
| Stability: | Shelf life: one year from despatch. |
| Gene Name: | matrix metalloproteinase 23B |
| Database Link: | Entrez Gene 8510 Human O75900 |
| Background: | MMP23A and MMP23B, two Metalloproteinase type proteases, are type II membrane-anchored zymogens that are proteolytically processed at a conserved motif and converted into secretory and mature enzymes. The proteins contain prepro, catalytic, cysteine-rich, interleukin-1 receptor-related and proline-rich domains. The MMP23A and MMP23B genes have been reported to express multiple mRNAs, some of which are derived by alternative splicing. |

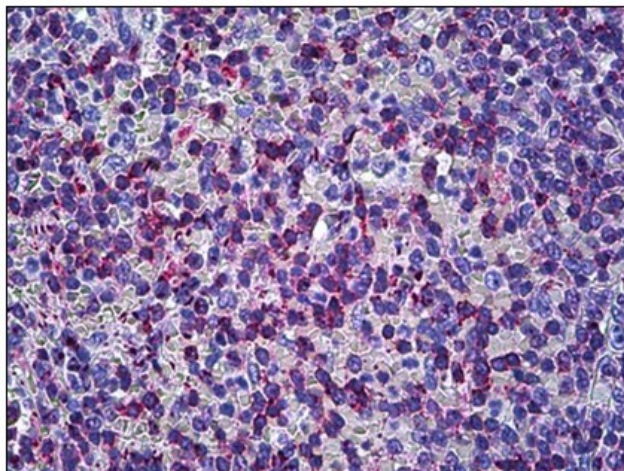


[View online »](#)

Synonyms: Matrix metalloproteinase-23, Matrix metalloproteinase 21, Matrix metalloproteinase 22, Femalysin, MIFR-1, MMP23A, MMP21, MMP23B, MMP22

Protein Families: Druggable Genome, Protease, Secreted Protein, Transmembrane

Product images:



Human Prostate: Formalin-Fixed, Paraffin-Embedded (FFPE)