

## Product datasheet for **AP31198PU-N**

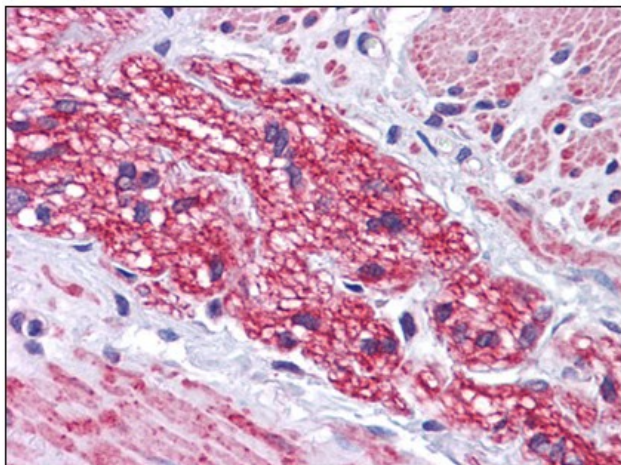
### Gemin 2 (GEMIN2) (C-term) Rabbit Polyclonal Antibody

#### Product data:

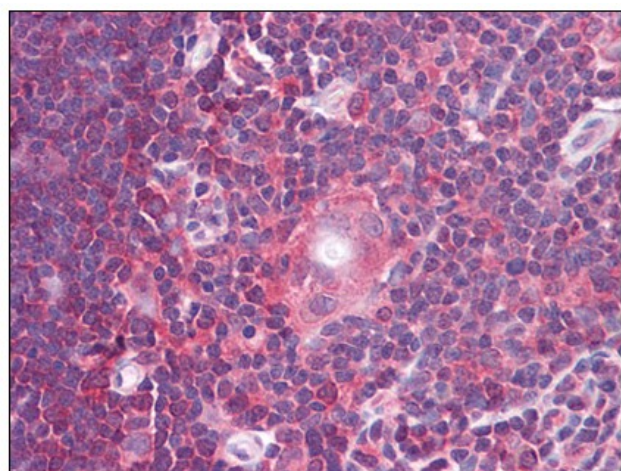
Product Type:	Primary Antibodies
Applications:	ELISA, IF, IHC, WB
Recommended Dilution:	<b>ELISA.</b> <b>Immunocytochemistry:</b> 4 µg/ml. <b>Immunohistochemistry on Paraffin Sections:</b> 5 µg/ml. <b>Western Blot:</b> 0.5 - 1 µg/ml.
Reactivity:	Human, Mouse, Rat
Host:	Rabbit
Isotype:	IgG
Clonality:	Polyclonal
Immunogen:	SIP1 antibody was raised against synthetic peptide - KLH conjugated
Specificity:	This antibody reacts to the C-term of SIP1.
Formulation:	PBS containing 0.02% sodium azide as preservative State: Purified State: Liquid purified Ig fraction
Concentration:	lot specific
Purification:	Immunoaffinity chromatography
Conjugation:	Unconjugated
Storage:	Store the antibody undiluted at 2-8°C.
Stability:	Shelf life: one year from despatch.
Gene Name:	gem nuclear organelle associated protein 2
Database Link:	<a href="#">Entrez Gene 66603 Mouse</a> <a href="#">Entrez Gene 84404 Rat</a> <a href="#">Entrez Gene 8487 Human</a> <a href="#">O14893</a>
Synonyms:	GEMIN-2
Protein Families:	Druggable Genome, Stem cell - Pluripotency



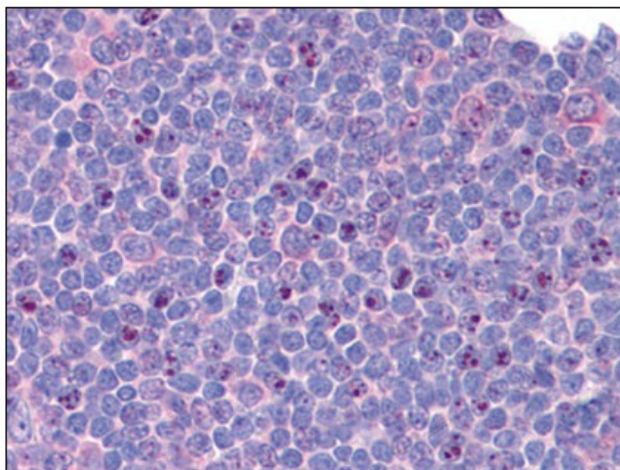
[View online »](#)

**Product images:**

Human Colon, Nerve: Formalin-Fixed, Paraffin-Embedded (FFPE)



Human Thymus: Formalin-Fixed, Paraffin-Embedded (FFPE)



Human Tonsil: Formalin-Fixed, Paraffin-Embedded (FFPE)