

## Product datasheet for **AP31196PU-N**

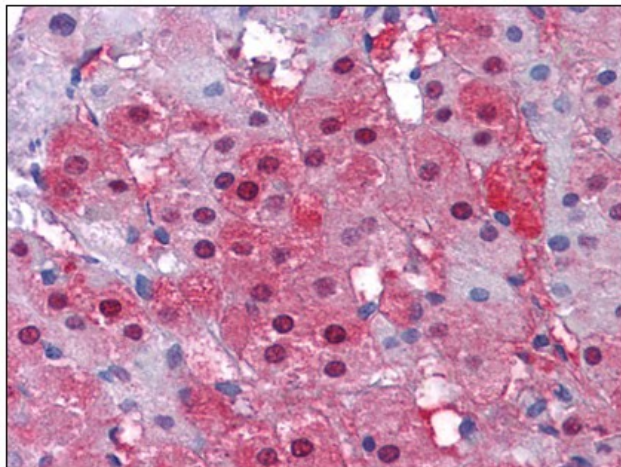
### Isocitrate dehydrogenase (IDH1) (C-term) Rabbit Polyclonal Antibody

#### Product data:

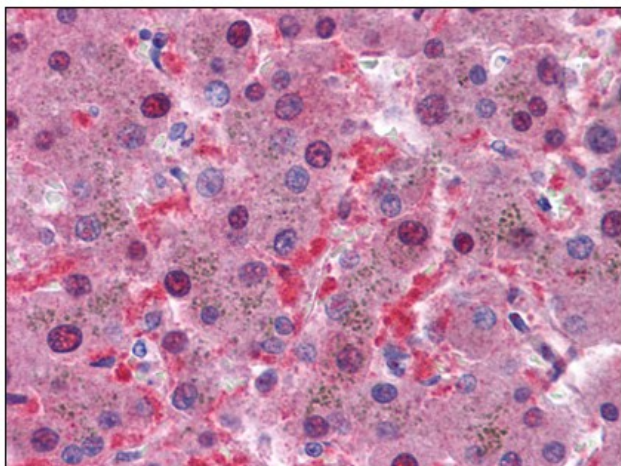
Product Type:	Primary Antibodies
Applications:	ELISA, IHC, WB
Recommended Dilution:	<b>ELISA.</b> <b>Immunohistochemistry on Paraffin Sections:</b> 5 µg/ml. <b>Western Blot:</b> 1 - 2 µg/ml.
Reactivity:	Human, Mouse, Rat
Host:	Rabbit
Isotype:	IgG
Clonality:	Polyclonal
Immunogen:	IDH1 antibody was raised against synthetic peptide - KLH conjugated
Specificity:	This antibody reacts to the C-term of IDH1.
Formulation:	PBS containing 0.02% sodium azide as preservative State: Purified State: Liquid purified Ig fraction
Concentration:	lot specific
Purification:	Immunoaffinity chromatography
Conjugation:	Unconjugated
Storage:	Store the antibody undiluted at 2-8°C.
Stability:	Shelf life: one year from despatch.
Gene Name:	isocitrate dehydrogenase (NADP(+)) 1, cytosolic
Database Link:	<a href="#">Entrez Gene 15926 Mouse</a> <a href="#">Entrez Gene 24479 Rat</a> <a href="#">Entrez Gene 3417 Human O75874</a>
Synonyms:	PICD, Cytosolic NADP-isocitrate dehydrogenase, ICDH, IDP, Oxalosuccinate decarboxylase
Protein Pathways:	Citrate cycle (TCA cycle), Glutathione metabolism, Metabolic pathways



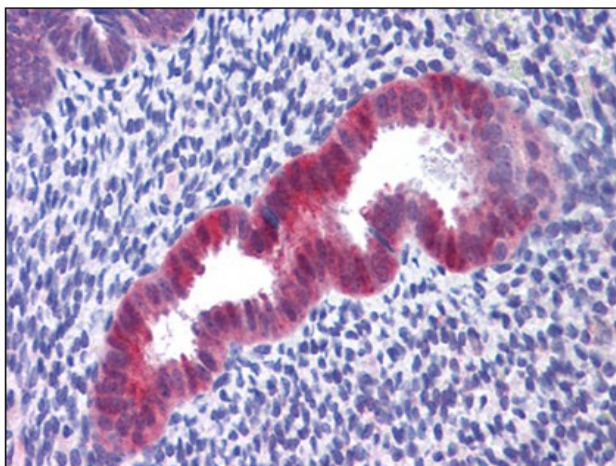
[View online »](#)

**Product images:**

Human Adrenal: Formalin-Fixed, Paraffin-Embedded (FFPE)



Human Liver: Formalin-Fixed, Paraffin-Embedded (FFPE)



Human Uterus: Formalin-Fixed, Paraffin-Embedded (FFPE)