

Product datasheet for **AP31193PU-N**

FOXO4 (N-term) Rabbit Polyclonal Antibody

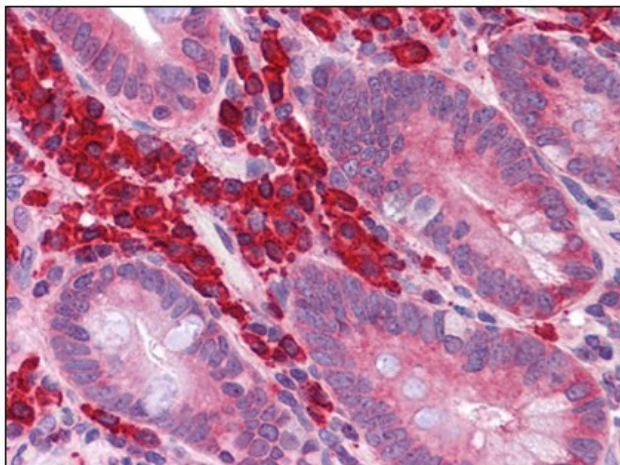
Product data:

| | |
|-----------------------|---|
| Product Type: | Primary Antibodies |
| Applications: | ELISA, IF, IHC, WB |
| Recommended Dilution: | ELISA. Immunocytochemistry. Immunohistochemistry on Paraffin Sections: 5 µg/ml. Western Blot: 0.5 - 1 µg/ml. |
| Reactivity: | Human, Mouse, Rat |
| Host: | Rabbit |
| Isotype: | IgG |
| Clonality: | Polyclonal |
| Immunogen: | FOXO4 antibody was raised against synthetic peptide - KLH conjugated |
| Specificity: | This antibody reacts to the N-term of FOXO4. |
| Formulation: | PBS containing 0.02% sodium azide as preservative State: Purified State: Liquid purified Ig fraction |
| Concentration: | lot specific |
| Purification: | Immunoaffinity chromatography |
| Conjugation: | Unconjugated |
| Storage: | Store the antibody undiluted at 2-8°C. |
| Stability: | Shelf life: one year from despatch. |
| Gene Name: | forkhead box O4 |
| Database Link: | Entrez Gene 54601 Mouse Entrez Gene 302415 Rat Entrez Gene 4303 Human P98177 |
| Synonyms: | Forkhead box protein O4 |
| Protein Families: | Transcription Factors |

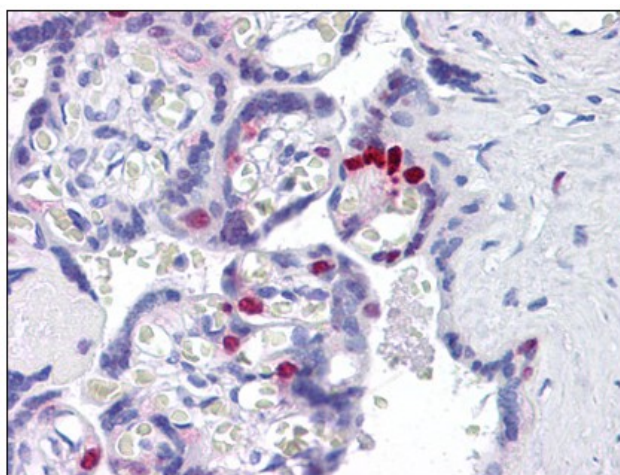


[View online »](#)

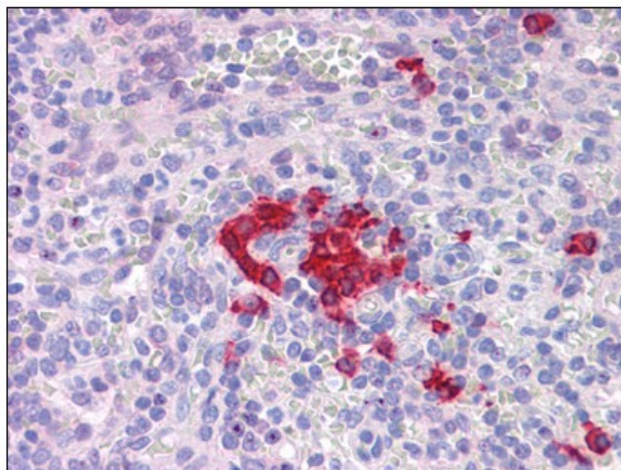
Product images:



Human Small Intestine: Formalin-Fixed, Paraffin-Embedded (FFPE)



Human Placenta: Formalin-Fixed, Paraffin-Embedded (FFPE)



Human Spleen: Formalin-Fixed, Paraffin-Embedded (FFPE)