

## Product datasheet for **AP31189PU-N**

### CD40 (C-term) Rabbit Polyclonal Antibody

#### Product data:

Product Type:	Primary Antibodies
Applications:	IHC, IP, WB
Recommended Dilution:	<b>Immunohistochemistry on Paraffin Sections:</b> 1/100. <b>Immunoprecipitation.</b> <b>Western Blot.</b>
Reactivity:	Human, Mouse, Rat
Host:	Rabbit
Isotype:	IgG
Clonality:	Polyclonal
Immunogen:	CD40 antibody was raised against a synthetic peptide derived from C-terminal of human CD40
Specificity:	This antibody reacts to the C-term of CD40.
Formulation:	10 mM PBS, pH 7.4 containing BSA as stabilizer and sodium azide as preservative State: Purified State: Liquid purified Ig fraction
Purification:	Immunoaffinity chromatography
Conjugation:	Unconjugated
Storage:	Store the antibody undiluted at 2-8°C. <b>DO NOT FREEZE!</b>
Stability:	Shelf life: one year from despatch.
Gene Name:	CD40 molecule
Database Link:	<u><a href="#">Entrez Gene 21939 Mouse</a></u> <u><a href="#">Entrez Gene 171369 Rat</a></u> <u><a href="#">Entrez Gene 958 Human P25942</a></u>



[View online »](#)

**Background:**

CD40 is a member of the TNF-receptor superfamily. It has been found to be essential in mediating a broad variety of immune and inflammatory responses including T cell-dependent immunoglobulin class switching, memory B cell development, and germinal center formation. AT-hook transcription factor AKNA is reported to coordinately regulate the expression of this receptor and its ligand, which may be important for homotypic cell interactions. Adaptor protein TNFR2 interacts with this CD40 and serves as a mediator of the signal transduction. The interaction of CD40 and its ligand is found to be necessary for amyloid-beta-induced microglial activation, and thus is thought to be an early event in Alzheimer disease pathogenesis.

**Synonyms:**

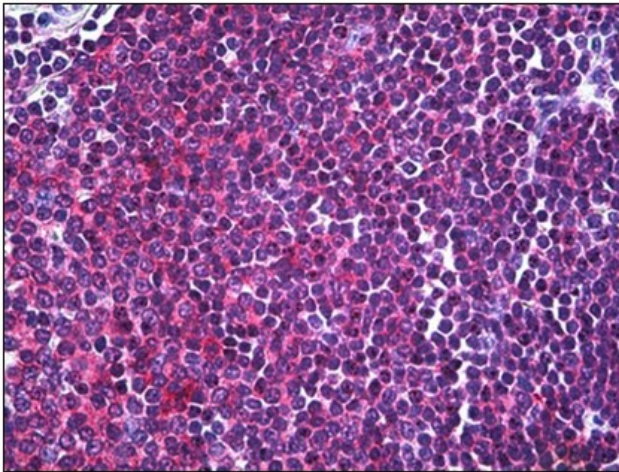
TNFRSF5, CDw40, Bp50

**Protein Families:**

Druggable Genome, Secreted Protein, Transmembrane

**Protein Pathways:**

Allograft rejection, Asthma, Autoimmune thyroid disease, Cell adhesion molecules (CAMs), Cytokine-cytokine receptor interaction, Primary immunodeficiency, Systemic lupus erythematosus, Toll-like receptor signaling pathway, Viral myocarditis

**Product images:**

Human Spleen: Formalin-Fixed, Paraffin-Embedded (FFPE)