

## Product datasheet for **AP31185PU-N**

### **KIAA0652 (ATG13) (C-term) Rabbit Polyclonal Antibody**

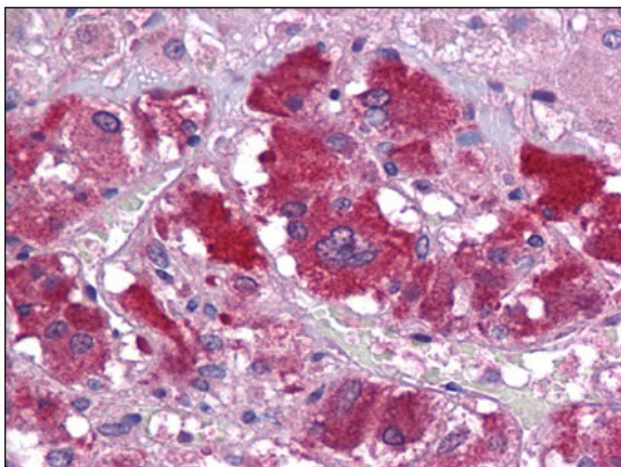
#### Product data:

Product Type:	Primary Antibodies
Applications:	ELISA, IHC, WB
Recommended Dilution:	<b>ELISA.</b> <b>Immunohistochemistry on Paraffin Sections:</b> 5 µg/ml. <b>Western Blot:</b> 1 - 2 µg/ml.
Reactivity:	Human, Mouse, Rat
Host:	Rabbit
Isotype:	IgG
Clonality:	Polyclonal
Immunogen:	ATG13 antibody was raised against synthetic peptide
Specificity:	This antibody reacts to the C-term of ATG13.
Formulation:	PBS containing 0.02% sodium azide as preservative State: Purified State: Liquid purified Ig fraction
Concentration:	lot specific
Purification:	Immunoaffinity chromatography
Conjugation:	Unconjugated
Storage:	Store the antibody undiluted at 2-8°C.
Stability:	Shelf life: one year from despatch.
Gene Name:	autophagy related 13
Database Link:	<a href="#">Entrez Gene 51897 Mouse</a> <a href="#">Entrez Gene 362164 Rat</a> <a href="#">Entrez Gene 9776 Human O75143</a>
Synonyms:	KIAA0652, Autophagy-related protein 13

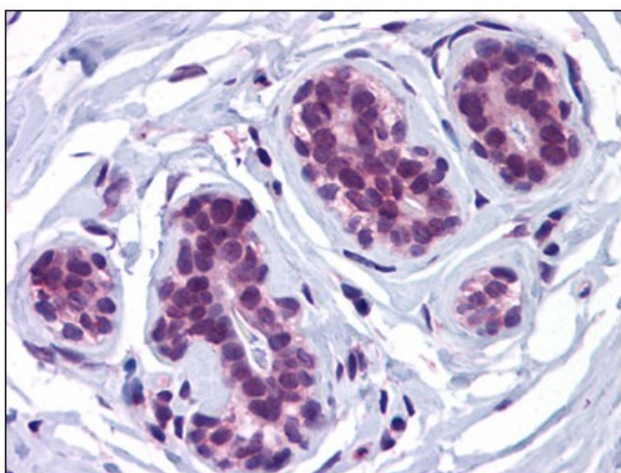


[View online »](#)

**Product images:**



Human Adrenal: Formalin-Fixed, Paraffin-Embedded (FFPE)



Human Breast: Formalin-Fixed, Paraffin-Embedded (FFPE)